



Peakto Quick Start Guide

Version 2.0.1

Table of Content

1.Quick start	3
1.1.Peakto's interface	3
1.1.1. The menu bar mode	4
1.2.How to start with Peakto?	5
1.2.1. Launching Peakto for the first time	5
1.2.2. The demo catalog	6
1.3.Adding images and videos to Peakto	6
1.3.1. Adding folders	6
1.3.2. Adding catalogs	7
1.3.3. Validating catalogs	8
1.3.4. Viewing all the sources	9
1.3.5. Understanding the ingestion process	10
1.3.1. The Peakto catalog	11
1.4.Understanding Instants	12
1.4.1. Identifying images with multiple versions	13
1.4.2. Viewing instants	13
2. Common Peakto Tasks	15
2.1.Exploring using the grid	15
2.1.1. Anatomy of a grid cell	16
2.1.2. New Video Interface Features	18
2.2.Annotating your images and videos	19
2.2.1. Annotations and XMP sidecars	21
2.2.2. Annotations and exporting	22
2.3.Working with filters	22
2.3.1. The Filter Bar	23
2.3.2. The Middle Panel	23
2.3.3. Timeline	25
2.4.Working with albums	27
2.4.1. Explicit Albums	28
2.4.2. Smart Albums	28
2.4.3. Organising albums into folders	28
2.4.4. Albums export	28
2.5.Search through all your photos & videos	29

2.5.1. Conversational photo and video search	29
2.5.3. Similarity-based image search	31
2.5.3. Search by similar features:	33
2.5.4. Centralized search thanks to filters	34
2.6.View your images and videos on a map	35
2.7.Categorize your photos automatically thanks to AI	36
2.8.Access to your editing application	37
2.9.Gather all your modification of a same shot	37
2.10.Annotate people with Face Recognition	37
2.10.1.Face Annotation Using Clusters	37
2.10.2.Comprehensive Face Annotation: Flow and Manual Modes	40
2.10.3.Merging Clusters	41
2.10.4.Using Filters and Viewing Annotations	42
3. Editing Workspaces	42
3.1.The Pixelmator Pro editing workspace	42
3.1.1. Editing any images in Pixelmator Pro	43
3.2.The DXO PhotoLab editing workspace	43
3.2.1. Referencing DXO versions outside watched folders	45
3.3.The DXO PureRAW editing workspace	46

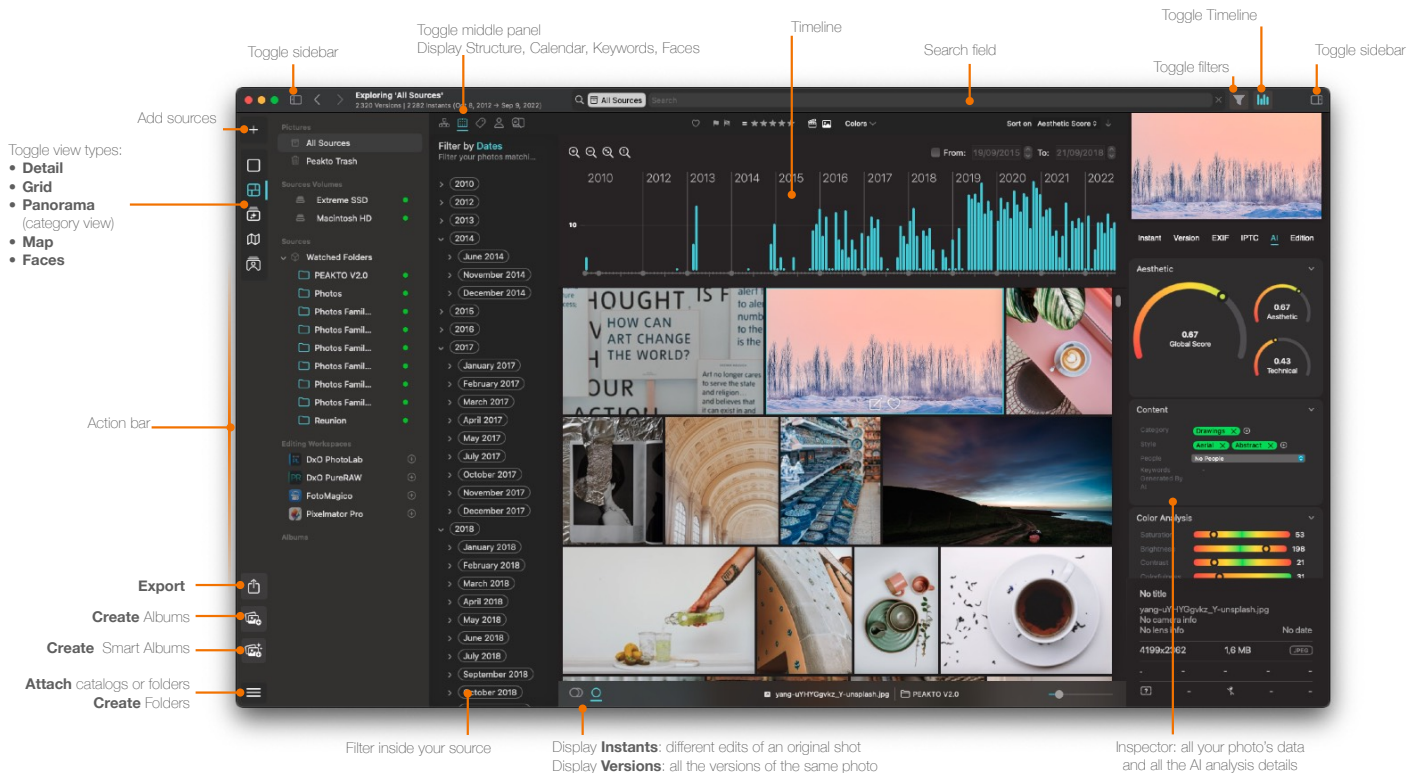
1. Quick start

This quick presentation will give you an overview of all the features of Peakto, without going into the details of each, so you can quickly start enjoying your photos and videos.

Peakto is a meta-cataloger that gathers in a single interface all of a photographer's photos and videos, thanks to its compatibility with many photo editing software (Apple Photos, Lightroom Classic, Luminar Neo, Capture One, Pixelmator Pro, DXO PhotoLab et Pure RAW, Instagram, Aperture, iView Media), with folders and photo files.

Peakto is designed to be the control tower that gives back the big picture to photographers on their photos/videos and provides tools to manage, analyse, automatically sort and create albums across app boundaries.

1.1. Peakto's interface



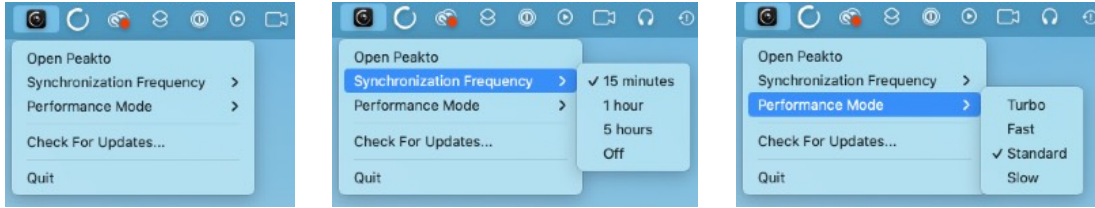
The main interface consists in:

- an **action bar** on the far left giving you access to the various view types (grid, detail, map, panorama, faces)
- A **side bar** listing all volumes and sources attached to Peakto. This is also where you will find all albums (simple and smart) that you create as well as the various workspaces that enhance the interaction between Peakto and third party apps. The sidebar can be made visible or hidden off using the toggle button in the toolbar.
- A **filter panel** with standard filters on dates, keywords, faces, ... This panel is opened and closed using the toggle button in the toolbar.
- A **timeline widget** showing the distribution of capture dates for the images in scope.
- A **property panel** with all the details about the selection. It can be made visible or invisible using a dedicated toggle button
- The **Main View** (grid, detail, map, panorama, faces) based on the selection in the action bar

1.1.1. The menu bar mode

New in Peakto 2.0. Peakto can now run in the background without a window and perform all synchronisation at a regular frequency without interrupting your work.

Peakto achieves this by exposing a menu bar companion easily identifiable in the macOS menu bar.



The menu bar app lets you change the Synchronisation frequency and control the Performance mode for regular ingestion. This new setting lets you manage how many computation resources (CPU cores) can be used to ingest new content or perform synchronisation. The **Standard** mode will give good overall performances while keeping the Mac responsive to perform other tasks. The **Slow** mode will run more slowly and keep most of the computer resources available for other tasks. In **Turbo** mode, Peakto will use almost all available resources so you should only use that mode if you don't intend to do other computer intensive tasks at the same time.

To enter in background mode, simply close the main window.

To open the main window, simply click on Peakto in the dock or choose '**Open Peakto**' from the menu bar.

1.2.How to start with Peakto?

Peakto is the digital hub for all your images.

It was designed to become the place where you access all your photo catalogs, image collections. It supports the following cataloging apps (Apple Photos, Lightroom Classic, Luminar 4, Luminar AI, Aperture, Capture One, iViewMedia, Instagram and some more).

Peakto will let you :

- i. Explore your photos in one interface
- ii. Search through all your photos
- iii. Categorize your photos automatically thanks to AI
- iv. Annotate and manage your photos
- v. Edit your photos and regroup the different versions
- vi. Create multi-source albums and export them

To start using Peakto, link your photos to it by following the recommendations on how to add photo sources in the next sections.

1.2.1. Launching Peakto for the first time

When you launch Peakto for the first time, you will be greeted by some Welcome screen that highlights the key functionalities of the software. You can always go back to that screen using the *Help* → *Welcome...* menu from the **Help** Menu.

Peakto will also detect what are the apps that you have installed on your Mac and will propose to activate some specific integrations. You can bypass this step and configure these

integrations later from the Settings dialog. If you are ready to configure these integrations, simply follow the on screen instructions. This is discussed in more details in next section.

1.2.2. The demo catalog

When you launch Peakto for the very first time, some demo content will be installed for you in order to explore the app's feature. The demo content is for preview only and is made from sample files as well as from open content from unsplash.com.

Demo content lets you explore all aspects of Peakto:

- image browsing from various sources
- Videos previews
- Metadata search
- Prompt search
- Panorama (AI based tagging)
- The Map
- Some Faces

The only thing that cannot be tested with demo content is the display of high resolution previews as by definition, these previews are not available because the source catalogs are offline.

Demo content can easily be removed by choosing **File** → **Remove Demo Content** from the menu. **Peakto will restart on a blank database.**

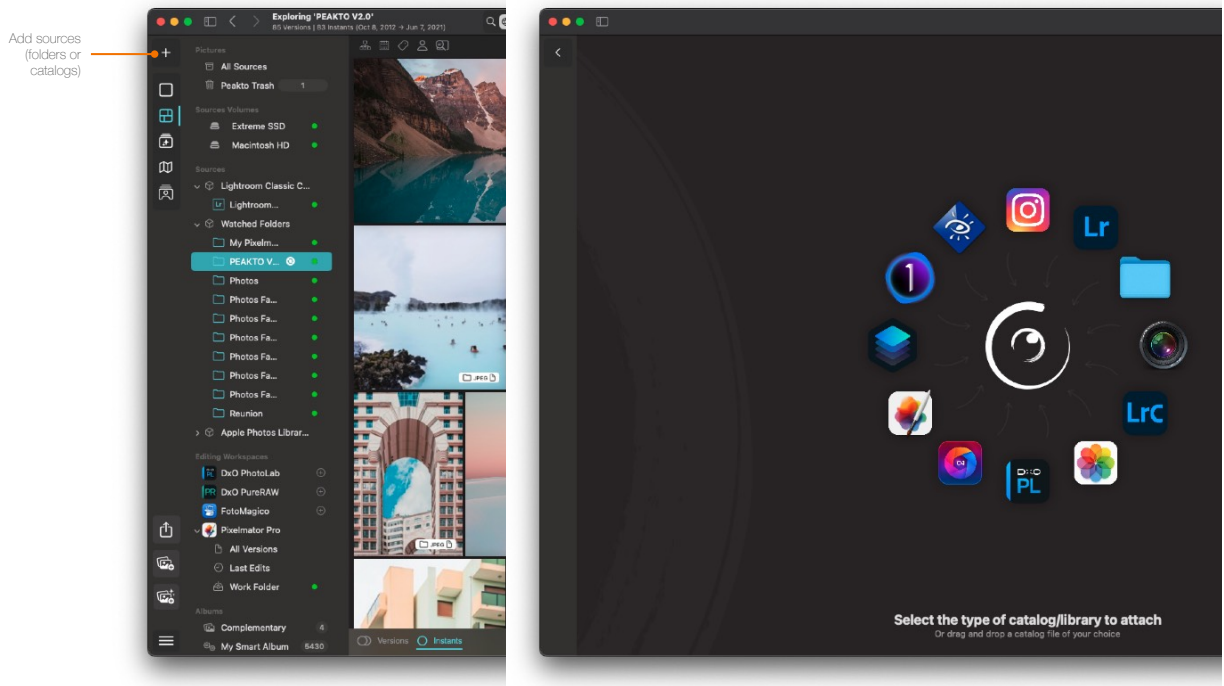
1.3. Adding images and videos to Peakto

You can add 2 types of content to Peakto:

1. Files inside folders
2. Catalogs of one of the supported types (Aperture, Lightroom, CaptureOne Pro, iView Media, all flavours of Luminar)

1.3.1. Adding folders

Simply drag any folder from the Finder to the Peakto user interface or alternatively, choose **File** → **Attach Folders...** from the **File** Menu. You can also use the global "+" button at the top of the interface to reveal the Add menu and click on the Folder icon. Your folder can contain images or any of the video formats natively supported by macOS (mov, mp4, etc.).



The global “Add” dialog.

1.3.2. Adding catalogs

If you know the location of your catalogs, you can simply drag the catalog file into the Peakto user interface. It works for :

- Apple Aperture catalogs,
- Apple Photos libraries
- Lightroom *.lrcat* catalog files
- Capture One Pro *.cocatalog* catalog files
- Capture One Pro *.cosessiondb* session files
- Luminar catalog files
- iView Media Pro *.ivc* catalog files
- Etc...



.aplrary



.photoslibrary



.lrcat



.luminarneo
.luminarai
.luminar



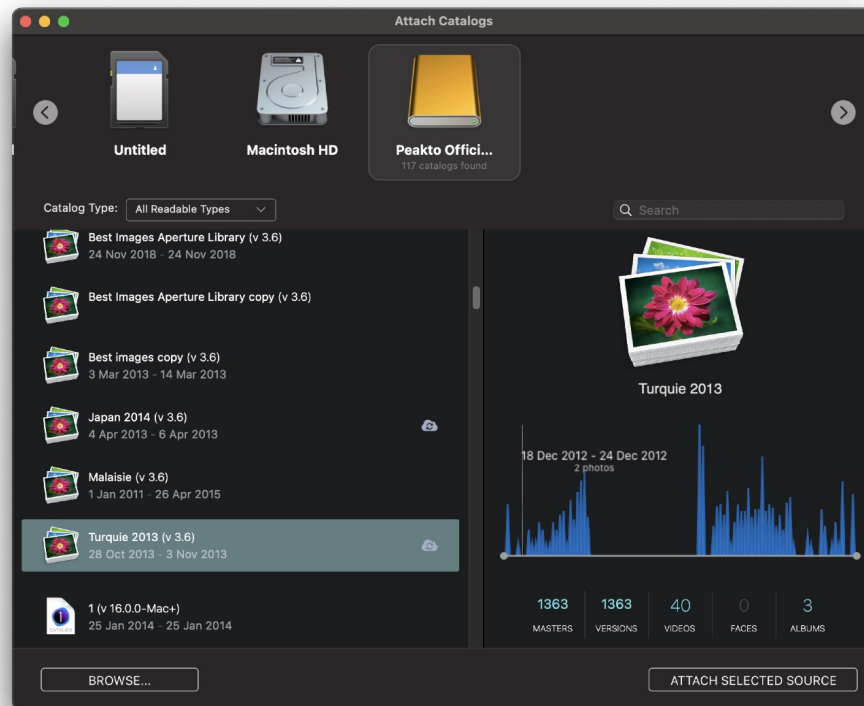
.cocatalog



.cosessiondb

Note: you **don't need a running copy** of these apps for Peakto to be able to open the catalogs/libraries as Peakto natively understands these formats. This is especially important for older apps (Aperture, iView Media) that do not run on modern Macs anymore.

Alternatively you can choose *File* → *Attach Catalogs...* from the **File** Menu or use the global “+” button at the bottom of the interface to reveal the Add menu and choose “*Attach Catalogs...*” item. Both actions will reveal the catalog browser that will scan all your attached drives for catalogs.



The catalog browser

From the **Catalog Browser** you can select any detected catalog from the list on the left and attach it to Peakto

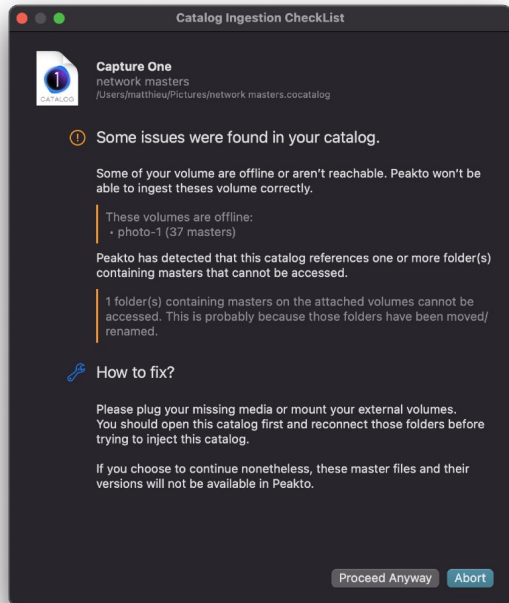
Peakto 2.0 introduces robust support for **videos**, making them first-class citizens in the Peakto ecosystem. Videos can now be integrated seamlessly, whether they come from files and folders or existing catalogs that support video formats, such as Lightroom, Capture One, and Apple Photos.

If you have previously ingested a Lightroom catalog with videos in Peakto 1.0, those videos would not have been visible. To make them appear in Peakto 2.0, you will need to perform a deep sync. Once synced, videos from your catalogs will be displayed in Peakto.

1.3.3. Validating catalogs

Before attaching a catalog, Peakto will perform some tests on the content to detect possible issues such as missing image volumes, catalog version incompatibilities. All issues are displayed in the Preflight dialog. You should take a moment to read about the detected issues and decide whether it is OK to proceed or whether you should perform some actions

before. Peakto tries to suggest some possible actions.



The preflight dialog

The most common issue is 'offline masters'. This happens if you ingest a catalog that is on an attached disk but the referenced files are on an off-line media. It is highly recommended to have all referenced media online when adding content in Peakto as Peakto will sometimes need to access the original media for situations where:

- no preview exists in the catalog
- some metadata is missing in the catalog and Peakto considers that it is safer to grab it from the file itself (this is the case for dates in Capture One videos, as these dates are missing in Capture One, but present in the file itself)
- You are ingesting videos. Peakto will build a small summary video by scanning the original media

It is however fine to proceed if the media cannot easily be put online. The results will be:

- less accurate previews, or smaller previews
- Missing metadata (all the catalog metadata will be present, but some additional metadata will be missing)
- Missing summary videos

1.3.4. Viewing all the sources

Once ingested, all sources appear in the sidebar and are grouped by type.

Next to the source name, Peakto will display some status icons (see below) indicating:

- if the source is online / offline
- If the source requires synchronisation
- If the source is open

Many commands can be accessed from the source's contextual menu



The sources in the sidebar (left). The contextual menu (right) that gives access to many possible actions on the source.

Note :

As discussed above, Peakto can now run in the background when the main window is closed, maintaining synchronization with source folders and catalogs.

Frequency Control: Users can set synchronization intervals (e.g., every 15 minutes, hourly).

Minimal Resources: Background operation uses minimal resources, ensuring Pictor is up-to-date upon opening.

1.3.5. Understanding the ingestion process

When a source of images (folders or catalogs) is ingested in Peakto the following happens behind the scenes:

- the source is fully read and the **metadata** of all images is retrieved. This includes metadata that is embedded in the image files, or metadata present in sidecars (XMP,...)
- The source **organisational structure is fully read**. This includes folder hierarchy for folders, and full catalog structure (albums¹, folders, projects, ...) for catalogs.
- Some **thumbnails** are constructed for each version present in the catalogs or folders.
- The instants (see later) are resolved.

Once these tasks are finished, the source can be viewed, searched, filtered, etc...

However, another long running task is spawned that will analyse all images and run some AI-based detections in order to build all keywords, scores used by Panorama. This long running task can be cancelled and resumed at any point later on.

¹ Smart albums are ignored as Peakto is not able to recreate the rules that were used in the original catalog, due to the varying capabilities of those apps.

1.3.1. The Peakto catalog

Peakto builds its own catalog with the ingested data. The design principles behind the Peakto catalog are the following:

- **We do not create copies of the master images:** when reading a catalog we do not copy any of the images.
- **We minimise the amount of disk space used:** the thumbnails that we create are small and we rely on the ability to access higher resolution previews inside the underlying catalogs or folders *on demand*.
- **We allow working with offline data:** you can index catalogs or folders that are on external drives and disconnect those drives. Peakto will let you annotate, organize, search,... even if the content is offline.
- We try to **create previews of the images that most accurately reflect the aspect of the image in the source catalog**. If you ingest a Luminar catalog with heavy edits on all the images, we will try to access the previews that Luminar has generated in order to display the versions in Peakto. When such previews are not available we indicate it.

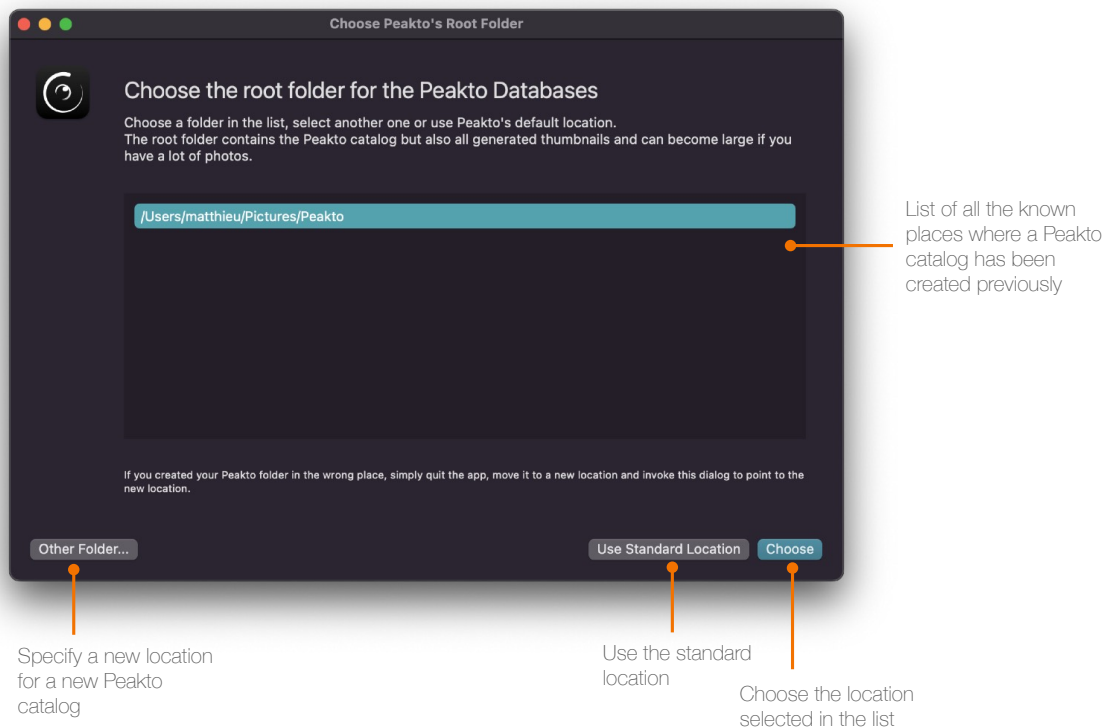
The location of the Peakto catalog is by default the *Peakto folder* inside your *Pictures* folder.

This folder can be moved to another location and Peakto will ask you to point to the new location upon restart.

You can also have multiple catalogs in multiple locations if you prefer to work this way.

Peakto mimics the behaviour of the **Apple Photos** app when it comes to switching catalogs:

- you can use the *Option* key pressed when launching Peakto to display a dedicated dialog allowing you to choose a catalog location or pick an existing location



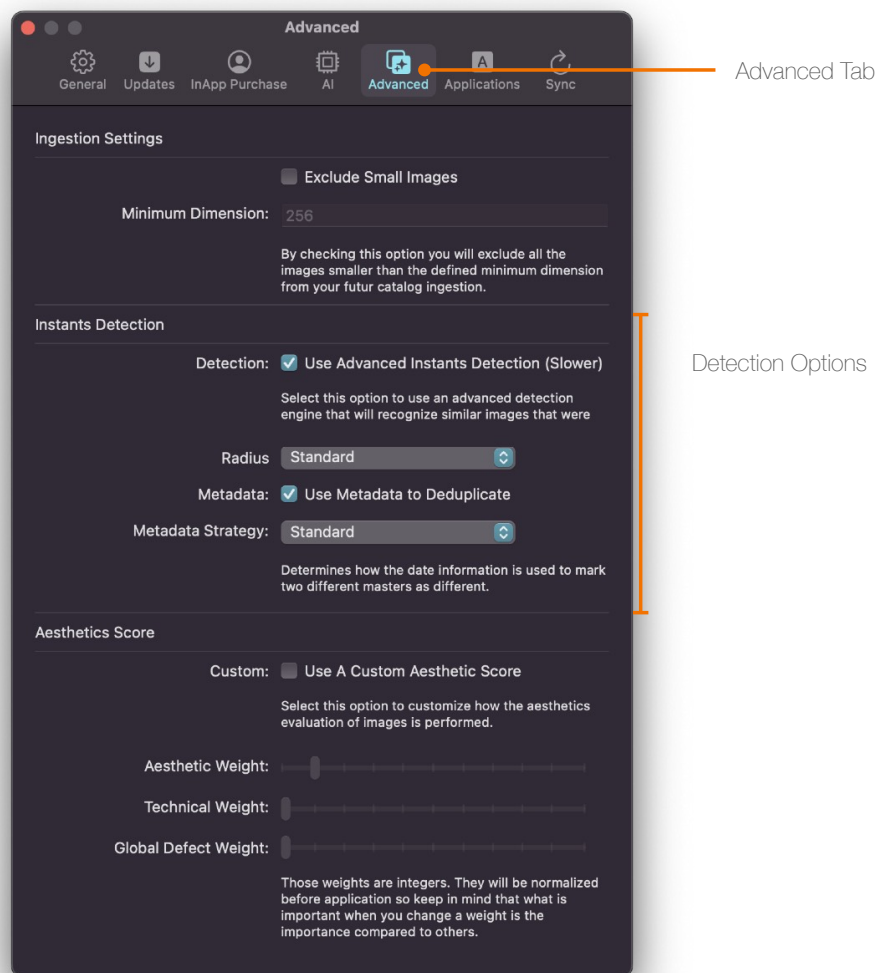
- You can access the current location in the preferences screen and change it from there.

1.4. Understanding Instants

Many non-destructive photo editing apps² can manage multiple *versions* of an original shot. The idea is to let the user explore many types of adjustments on the same image and create as many variations that are needed. These variations are called *virtual copies* in Lightroom or DXO PhotoLabs, *variants* in Capture One Pro, etc..

Peakto pushes that concept a bit further: indeed, because Peakto can handle multiple underlying sources, it can happen that the same original image (master) has been edited in various apps, causing multiple versions to exist in different catalogs. In order to bring all these versions together under one roof, Peakto uses the concept of **Instant**. The Instant will group all versions across app boundaries. This grouping is based on image similarity as well as some metadata considerations.

The control over the building of instants is accessible in the preferences.



² Some apps like Luminar or Apple Photos do not support that concept yet.

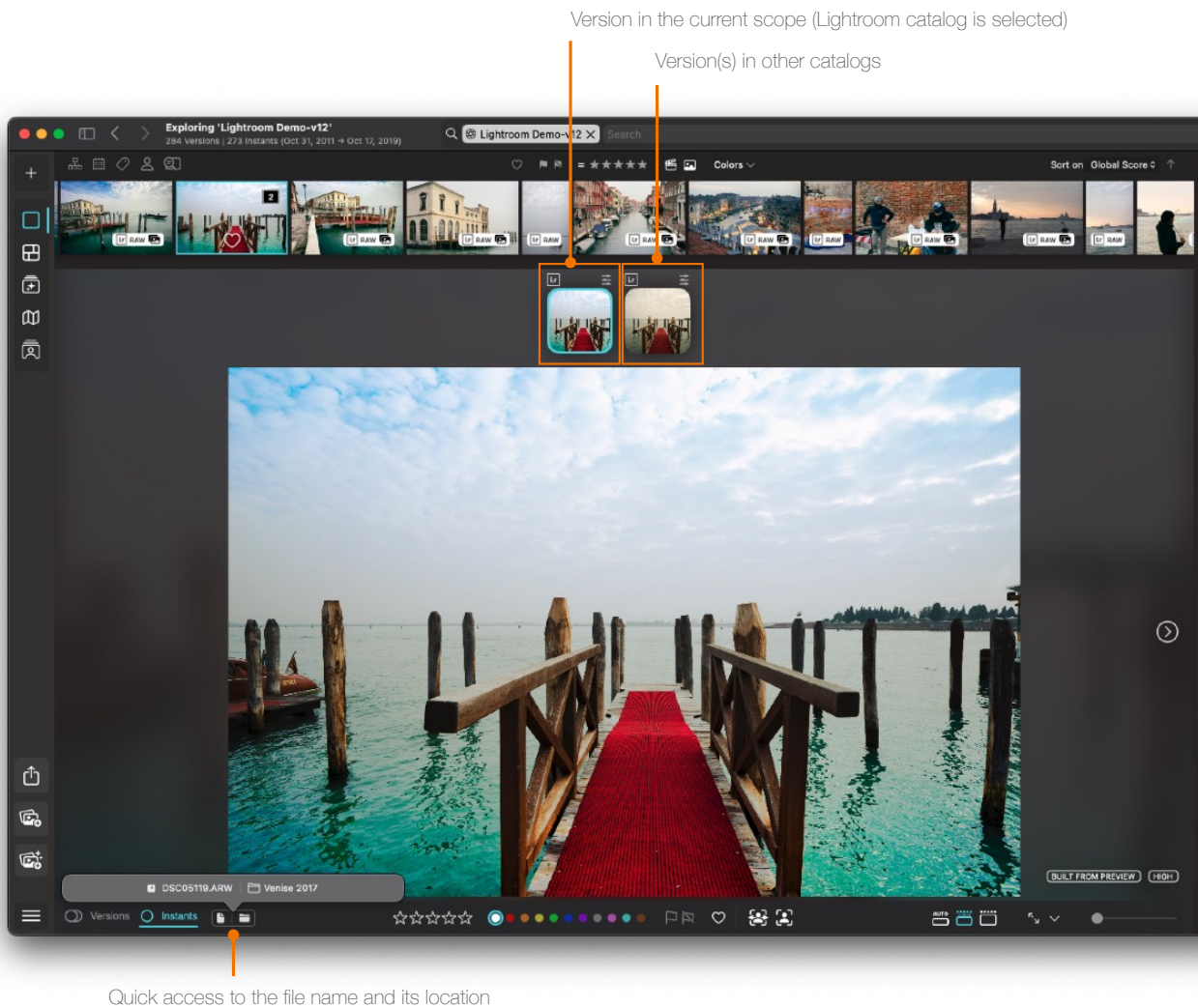
1.4.1. Identifying images with multiple versions

Every thumbnail in the grid view can display the number of versions in the underlying instant (see [Anatomy of a grid cell](#)). When a number is displayed it means that there is more than one version and you can go to the detail view to view the Instant.

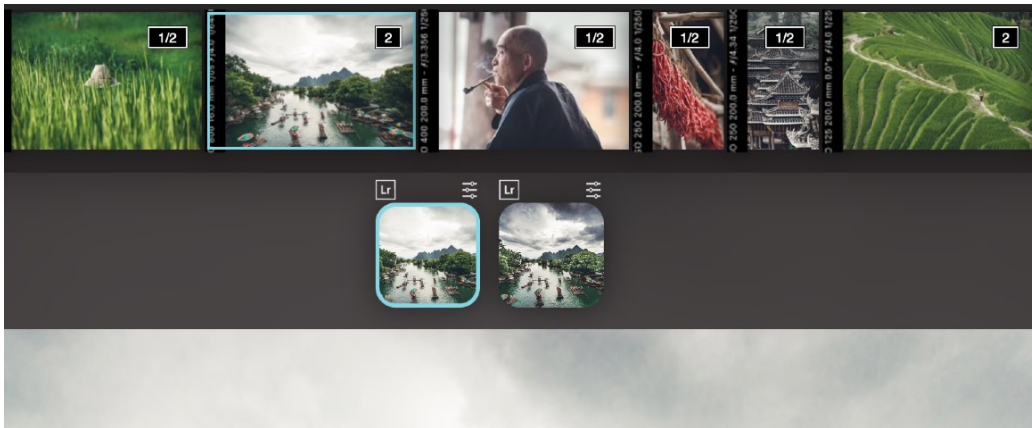
1.4.2. Viewing instants

When opening the detail view for a version that belongs to an Instant, Peakto will display all the versions present in that Instant on a left and right of a separator. Each thumbnail is tagged with the source catalog.

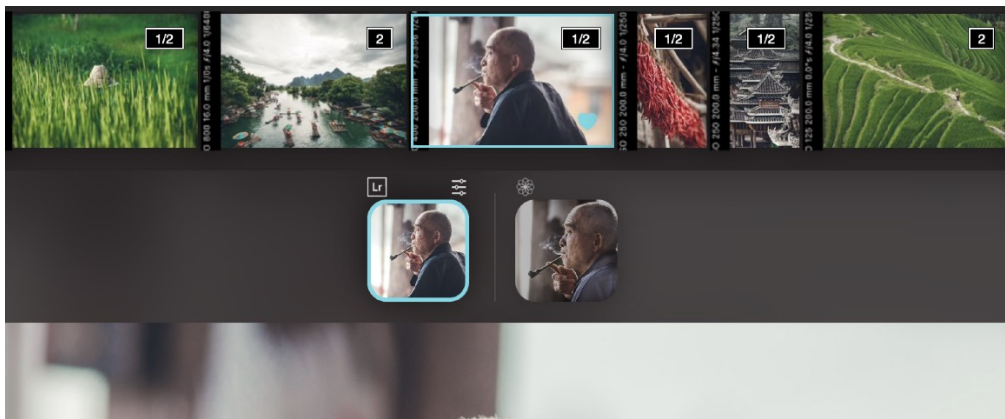
Several situations can occur.



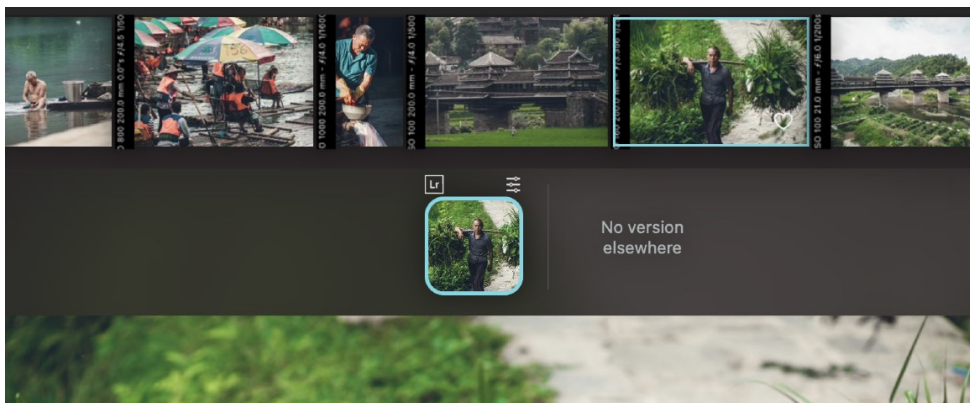
If versions are in the current selection, they are displayed to the left of the separator, like in the example below where all versions are virtual copies in the same Lightroom catalog.



If versions are in sources distinct from the current one, they are displayed on each side of the separator, like in the example below where the versions are either in Lightroom or in Apple Photos.



If no versions are available outside from the currently displayed version, the following is displayed.



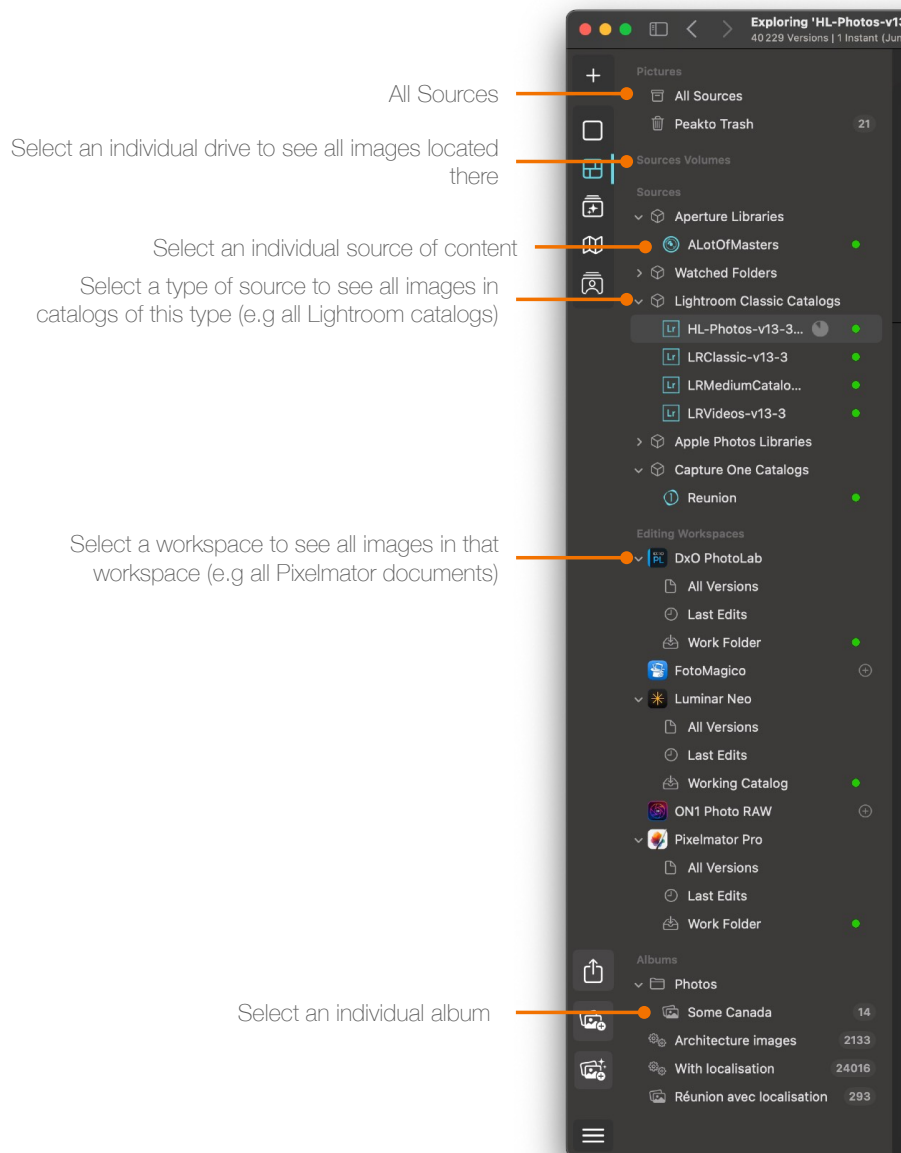
2. Common Peakto Tasks

2.1. Exploring using the grid

The **grid** view is probably the most familiar view available in Peakto to view your images and videos.

It works hand in hand with the **sidebar**: the sidebar selection drives what is shown in the grid. You can select :

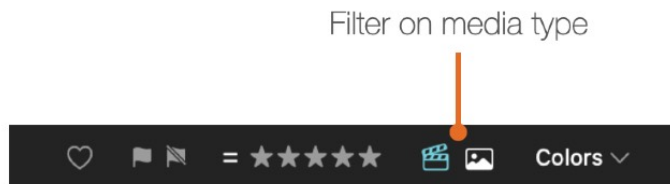
- a specific source
- a specific type of source (e.g all the Capture One catalogs)
- multiple sources at once, using the Command (⌘) key to create multiple selections
- all sources using the **All Sources** item at the top of the sidebar
- a specific Editing Workspace (e.g Pixelmator Pro) to see all images in that workspace
- a specific album



The grid lets you switch between the **Instants** and the **Versions** view:

- in **Instants** view, all the versions of an instant are collapsed and a single version (called the poster) is displayed in the Grid.
- In **Versions** view, all versions are displayed next to each other.

In Grid view and other views, we have added a filter that allows you to quickly view all videos within a specific scope.



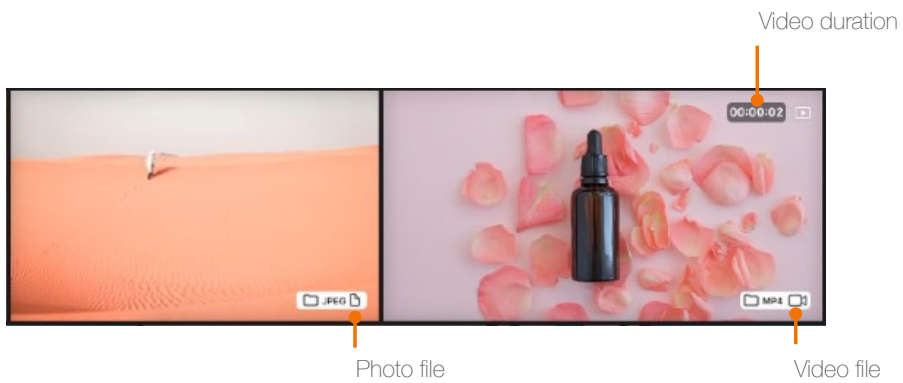
By using this filter, you can easily distinguish video files by their displayed time codes.

- **Video Filter:** Select this option to display only video files. All visible files will show time codes, indicating they are videos.
- **Image Filter:** Choose this option to display only image files, with no videos shown.
- **Combined View:** Opt to see both images and videos together in the same view.

2.1.1. Anatomy of a grid cell

In addition to displaying an image or video, each cell of the grid can display additional information using overlays.

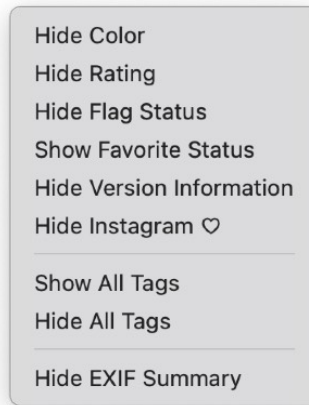
EXIF Summary



Grid cell

The Instants Information badge is displayed when there are more than 1 version in an instant. The badge takes the form nn/mm where nn is the number of version in the currently selected scope, while mm is the total number of versions found by Peakto. In the example above, 1/2 means that there is 1 version in the current scope out of a total of 2.

The type of information displayed is controlled using the *View* → *Grid View Options item* from the **View** Menu or using the *View Options* contextual menu accessible via Control+Click in the grid.



Contextual menu to control the display options

Videos are distinguished from photos by a 'Play' icon and the indication of the video's duration. It is possible to display the format by showing all tags in the grid.

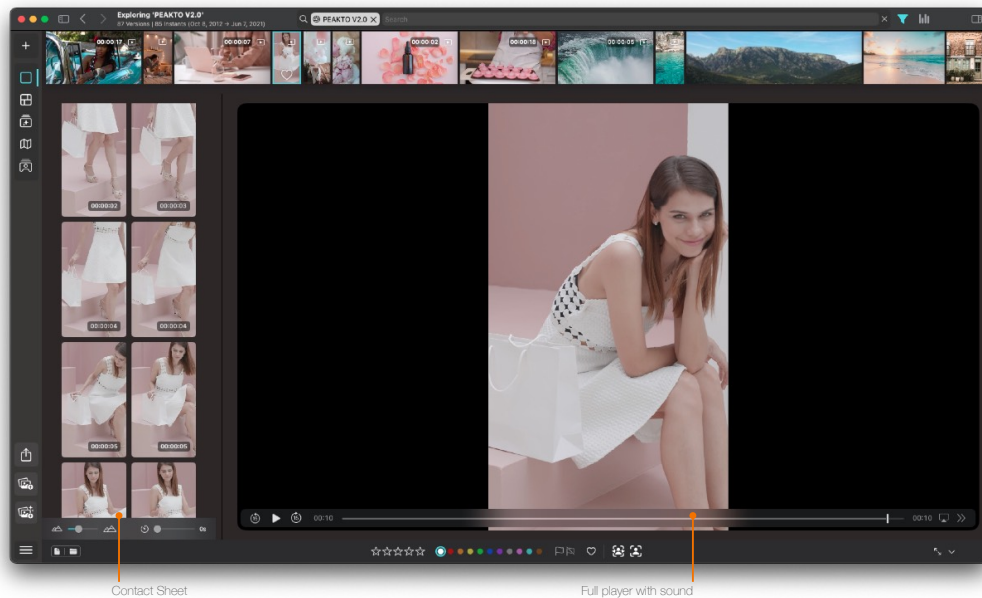
By hovering your cursor over a video, you access a scrubber that allows you to navigate through the video in preview mode.

Switch to detail view to access the video player and the video contact sheet.

2.1.2. New Video Interface Features

- **Time Code and Icons:** Videos are displayed with a time code and a small icon at the top, indicating they are videos.
- **Hover Preview:** When you hover the mouse over a video thumbnail, video frames are displayed without sound (this video summary is built from the original video file by sampling frames at a frequency that depends on the video duration. Building the summary requires the video file to be online at ingestion time³).
- **Contact Sheet and Player:** An additional icon at the bottom opens a window with a contact sheet and a player. The contact sheet allows you to quickly navigate to different parts of the video, while the player lets you view the full video with sound.

³ In the case of **Apple Photos**, Peakto will automatically download videos that are present in iCloud Photos and not present locally. The downloaded video is not the original but a preview that is more lightweight and generated by iCloud.



If the original video file goes offline (for instance, if it's stored on an external drive), you will still be able to view a summary video (sampled video) without sound. However, the full player will not be available, only the contact sheet.

Additional Features

- i. **Full Player and Contact Sheet:** Double-clicking a video opens the full player with sound and a contact sheet on the left. This setup helps you quickly navigate and play specific parts of the video.
- ii. **Annotations:** Videos can be annotated in the same way as other items in Peakto, allowing you to add detailed notes and metadata.
- iii. **Summary screen:** The existing summary screen has been updated to include detailed information for videos. This includes the codec for both video and audio, as well as file-specific details such as format, duration, and more. Note for Capture One users: For videos imported from Capture One, Peakto ensures that the dates are correctly set. Unlike Capture One, where the date is often missing, Peakto retrieves all metadata directly from the video files. This approach guarantees that all relevant information is accurately captured and displayed.

2.2. Annotating your images and videos

While Peakto gives you access to the metadata and annotations present in the underlying catalogs or files, you can also add your custom annotations.

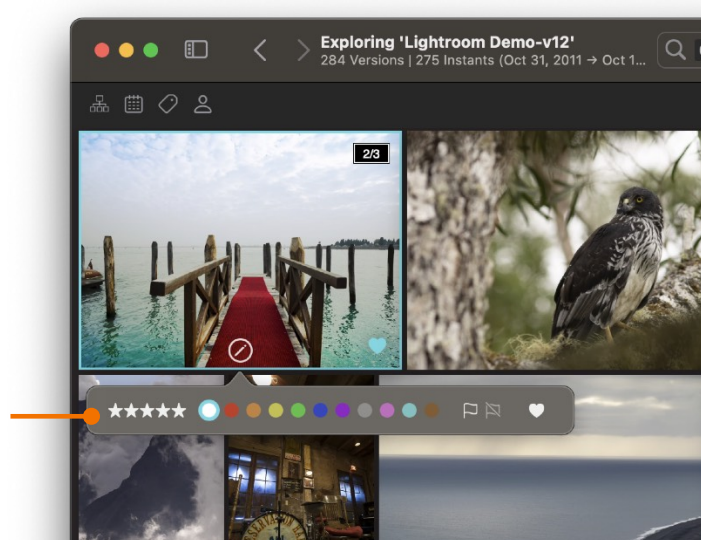
You can also annotate by:

- Flags,
- Color Tags,
- Ratings
- Favorites.
- Title /Caption / Copyright /...

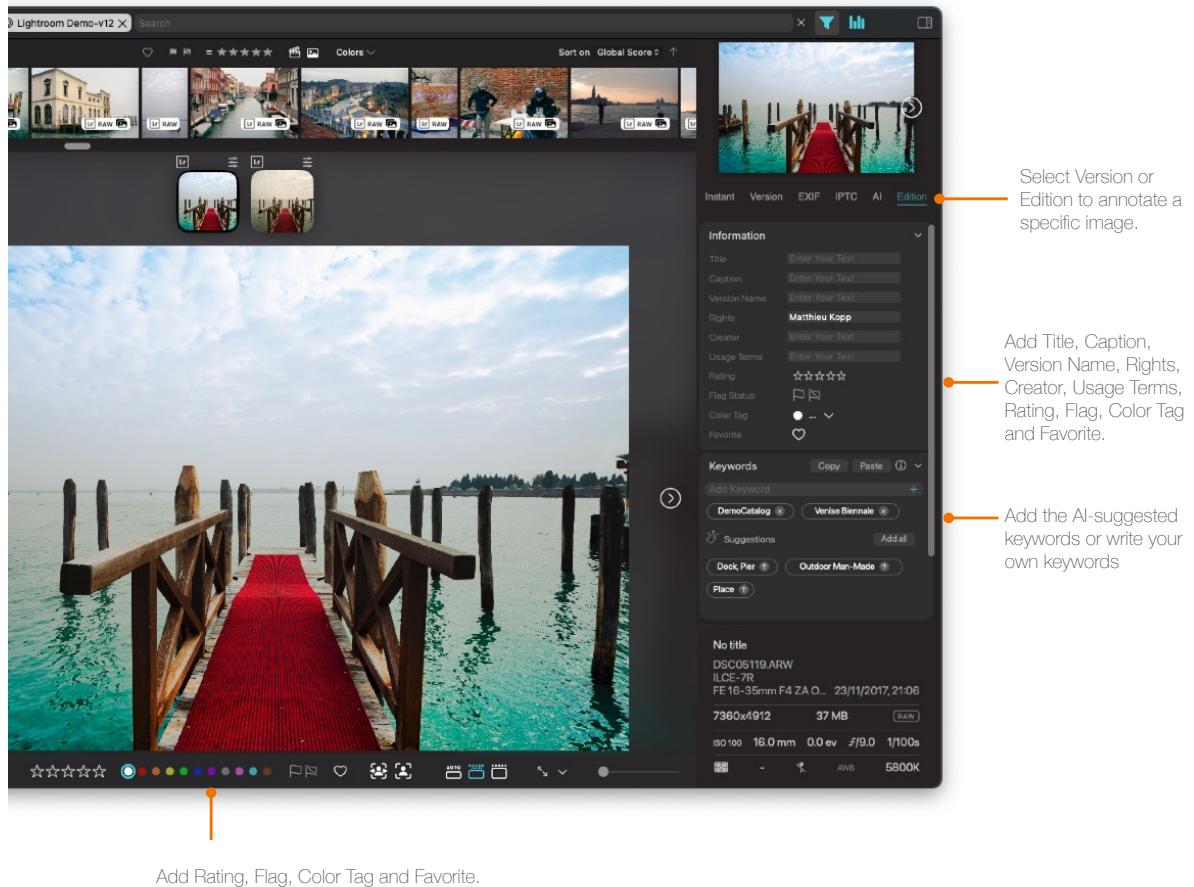
That information appears once a photo is selected:

- in the inspector,
- in the Detail view, at the bottom of each image,
- in the Grid view, by clicking on the Edit icon.

Quick access to Rating, Flag, Color Tag and Favorite from the Grid View.

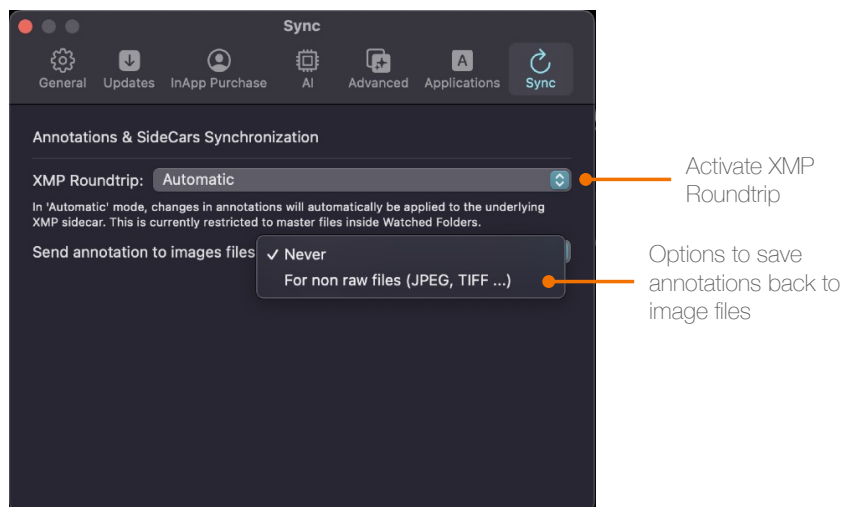


The inspector gives additional information about the origin of the annotations. A blue icon indicates that the annotation has been made in Peakto. Click on it to reveal the annotated version from the original editing app.



2.2.1. Annotations and XMP sidecars

Peakto can leverage XMP sidecars to exchange annotations with other tools that support XMP (Adobe Bridge, DXO Photolab,...). This is currently restricted to sources that are "Watched Folders". In order to activate this option, open the **Peakto Preferences** panel and select the **Sync** tab



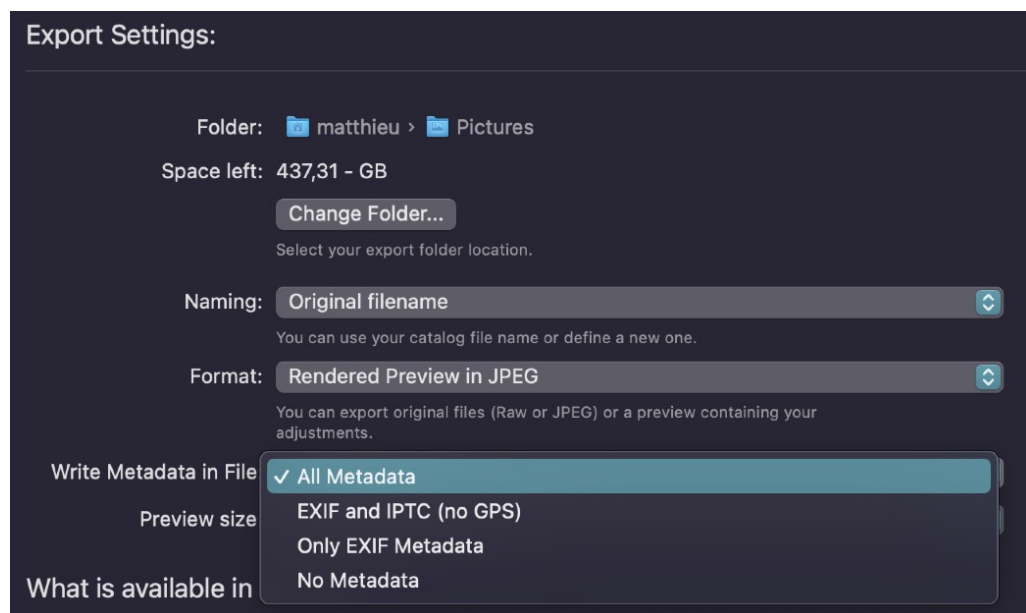
To activate the XMP roundtrip for Watched Folders, simply select “Automatic” for the XML Roundtrip option. When selected, it means that a sidecar XMP will be created or updated every time the corresponding master version is updated.

In the case of JPEG files, an additional options lets you control whether the annotations should be written into the files. This is useful as some tools don't rely on XMP sidecars for non-RAW files but read the metadata from the images themselves.

Activating the roundtrip via XMP lets you use Peakto to add annotations to files and see those annotations propagated to other tools that leverage XMP data.

2.2.2. Annotations and exporting

When exporting annotated versions from Peakto, the annotated values can be added to the exported images through an option available in the export panel. Choose the appropriate option from the **Write Metadata in File** dropdown menu. The **All Metadata** and Exif and IPTC (no GPS) both write custom annotations back to the file.



2.3. Working with filters

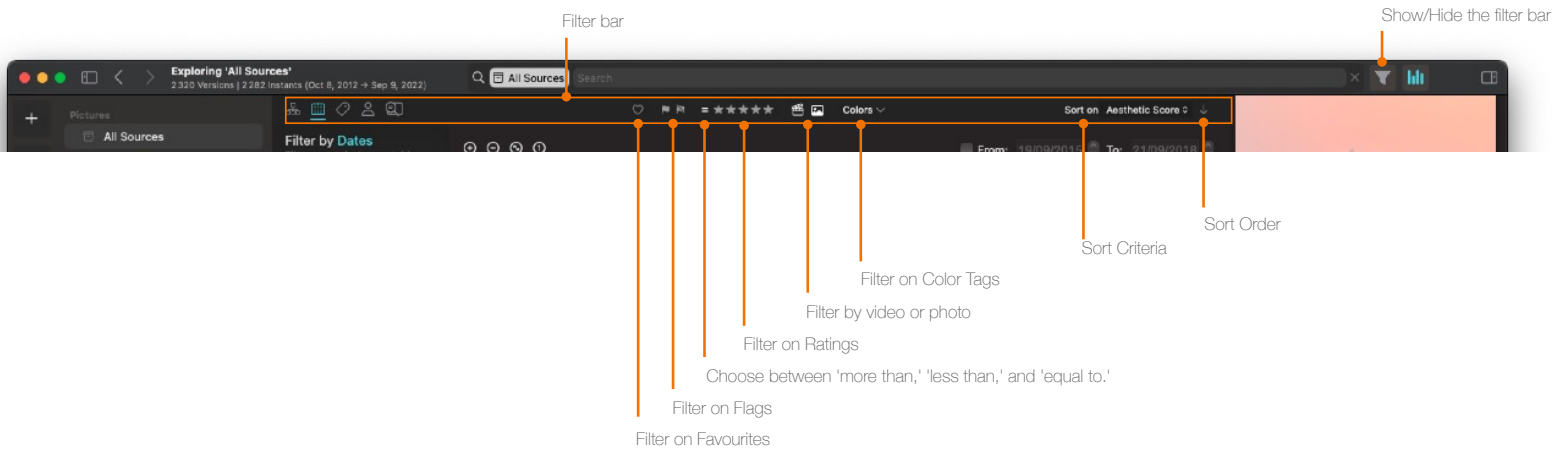
Filters are a great way to find images by restricting the scope via some criteria.

Peakto supports 2 ways of filtering in the user interface:

- via the **Filter Bar** underneath the toolbar. This bar can be shown or hidden using the Filter icon next to the search field.
- Via the **Middle Panel** to create powerful filters based on dates, keywords, faces and structure

2.3.1. The Filter Bar

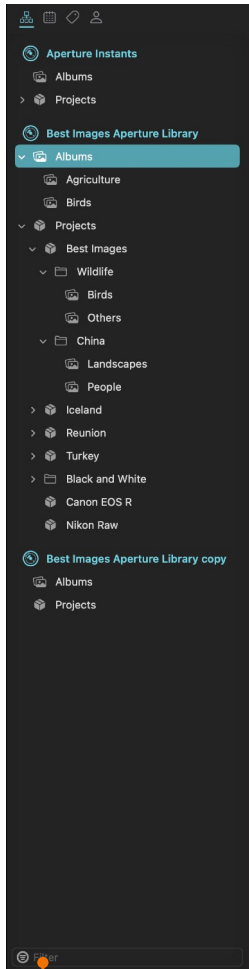
The Filter bar gives you access to the most common filters and lets you sort the view based on a variety of image properties



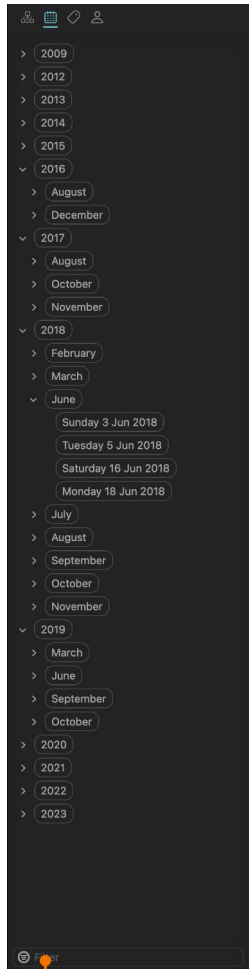
2.3.2. The Middle Panel

The Middle Panel (or Filter Panel) contains a variety of filter criteria and is shown/hidden by clicking on one of the 4 categories, which are:

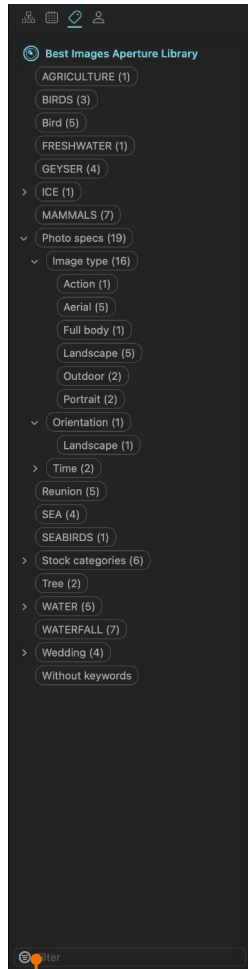
- **Structure**: this panel contains all the structural elements that are read from the underlying catalogs such as collections, folders, projects. In the case of File System folders, the structure panel shows the subfolders of the top watched folder.
- **Dates**: all the dates of the images, organised by year / month and day
- **Keywords**: all the keywords from the underlying catalog, including hierarchical relations
- **Faces**: all the faces from the underlying catalog



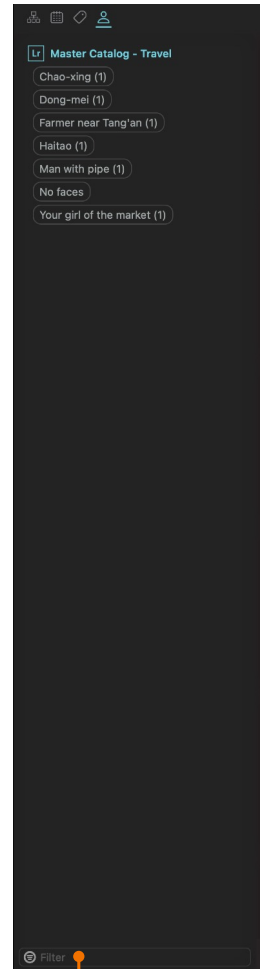
Filter the list by name



Filter the list by month/year



Filter the list by keyword



Filter the list by faces

Filters appear here

Add a filter to see the number of photos that match your criteria compared to the total number of photos taken during this period.

Select a time period using your mouse

Toggle the Timeline

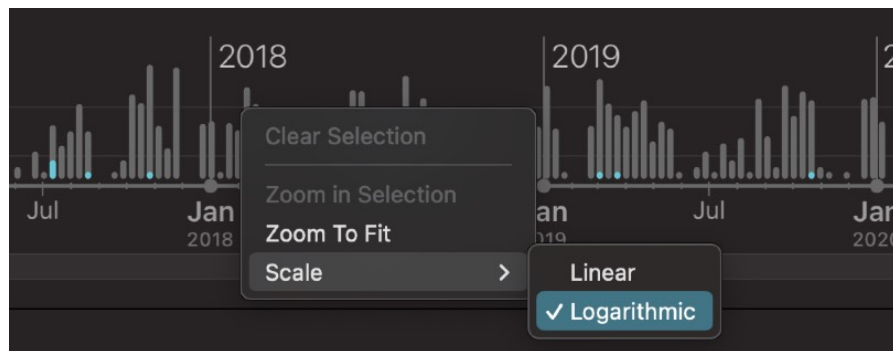
2.3.3. Timeline

The timeline is a new widget accessible from the toolbar, designed to display the distribution of images over time. You can combine the timeline with all other Peakto views: grid, map, detail view, and panorama.

Here's a detailed look at how it works and how you can use it:

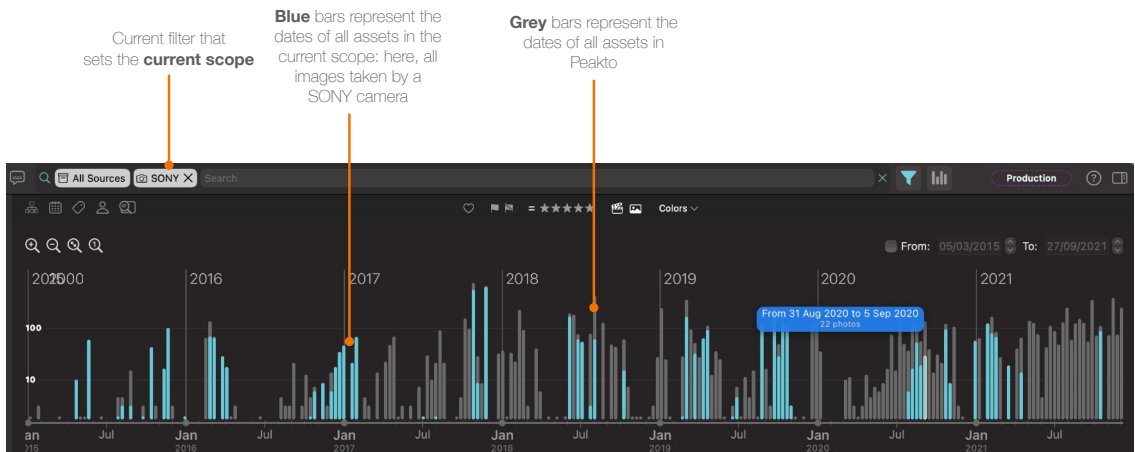
Overview of the Timeline

- **Distribution Display:** The timeline shows the distribution of capture dates for your images. For example, if you have 5,000 images, you can see bars representing the number of images taken within specific date ranges. Each bar represents a group of images, such as one bar representing 344 photos taken from November 8th to November 17th, 2015.
- **Logarithmic Scale:** The scale is logarithmic by default, meaning each line corresponds to 10, 100, 1,000 images, etc. You can switch to a linear scale using the contextual menu of the timeline.



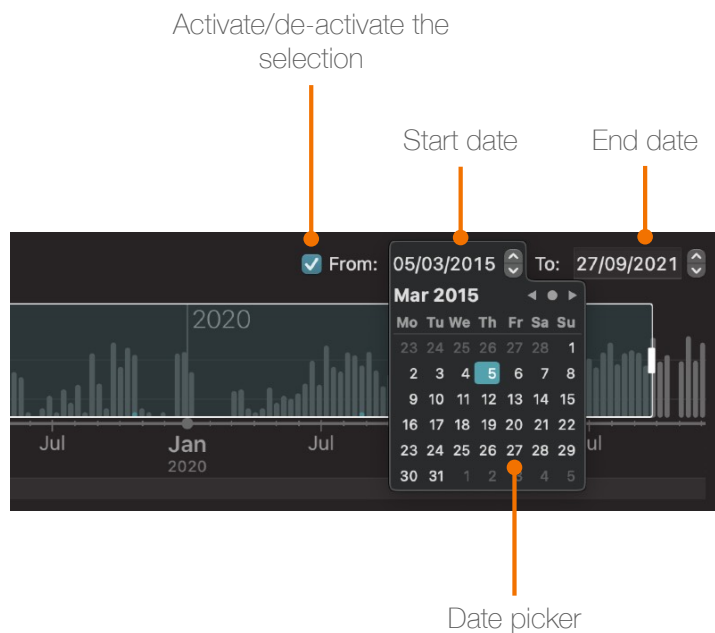
Meaning of bar colors:

One of the most powerful features of the timeline is the ability to compare the distribution of dates of the current selection with the distribution of all dates. For example, if you apply a specific filter (based on metadata, gps, face, ...) you can see how the resulting selection compares with the whole catalog. To achieve this, the timeline displays all the dates in grey and the dates in the current scope in blue.



Creating Selections with the Time windows:

- To focus on images from a specific period, click and hold to create a selection area.
- Adjust the handles to refine your selection. You can see the start and end date updated in real time as you move handles. Alternatively you can use the date entry fields to set the start and end dates by hand.



- Use the plus and minus zoom buttons to zoom in and out for more detail.
- Use the contextual menu to zoom on the selection if needed.
- This feature allows you to see the distribution of images over your selected period.

You can easily remove the selection either by clicking outside the window, or by unchecking the box next to the start and end dates.

Examples of Using the Timeline

Viewing Specific Sources:

- Clear your selection and choose a different source, such as a travel album from China.
- Easily see what happened on specific days by selecting and adjusting the time window.

Filtering Images:

- For instance, filter images rated above three stars. The blue bars will show the distribution of these selected images compared to the rest.
- This helps you understand how your best images are distributed over time.

Analyzing People:

- Open the People tab and select a person, like Bob.
- The timeline will display the distribution of Bob's photos over time, compared to all other photos.

Analyzing Daily Video Activity:

- Filter by videos taken on a specific day to see their distribution. For instance, you might notice most videos were taken during a certain period of the day.

Gaining Insights into Activity Patterns:

- This feature is an excellent way to analyze your activity patterns, equipment usage, and specific settings such as ISO or aperture. The timeline widget offers powerful insights into your photographic habits, allowing you to see trends and patterns over time.

2.3.4. Saving filters

Filters cannot be saved as such, but you can create Smart Albums based on a combination of such filters.

2.4. Working with albums

You can group photos and videos in collections called albums. If you are familiar with apps like Apple Photos / Lightroom / CaptureOne...then albums are going to feel very natural in Peakto.

Albums can be of two flavours:

- **Explicit albums** in which you manually add images via drag and drop
- **Smart albums** that are defined via a set of rules and update their content dynamically

Albums appear at the bottom of the sidebar and are created either from the *File* → *New Album...* / *File* → *New Smart Album...* menu actions from the **File** Menu or using the global "Add" button at the bottom of the sidebar.

All albums can contain photos from all kinds of sources.

2.4.1. *Explicit Albums*

Explicit albums, once created, are populated via drag and drop of content.

2.4.2. *Smart Albums*

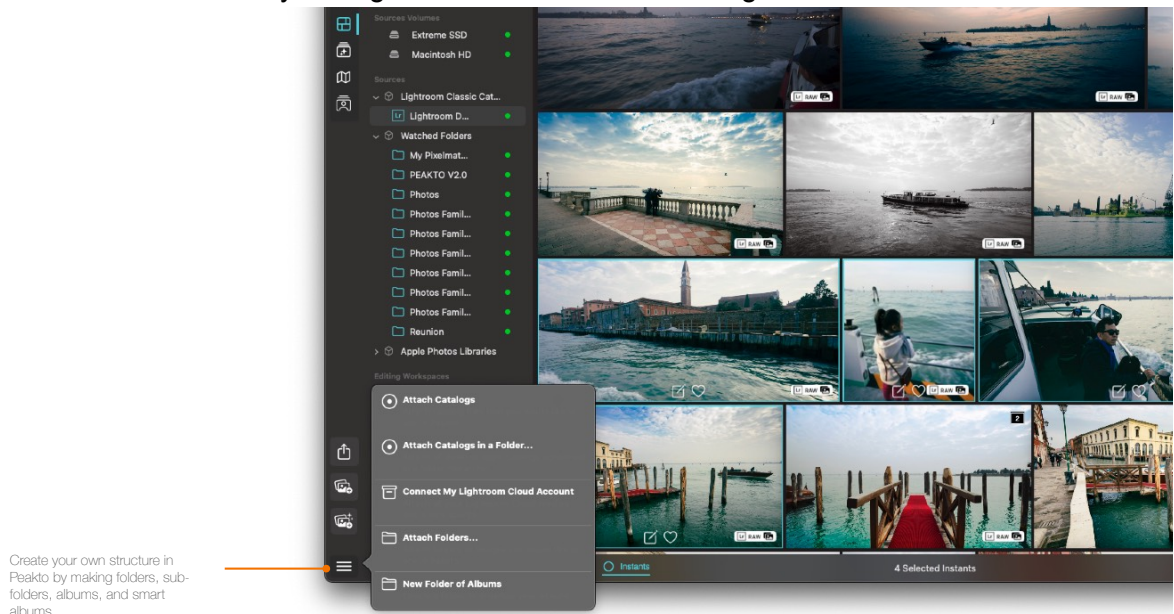
Smart albums are created by combining criteria on a attributes of images that live inside the catalog:

- EXIF metadata
- IPTC metadata and annotations
- Panorama-generated keywords and image categories
- AI generated scores
- File and Path properties

Rules can be arbitrarily complex and mix AND and OR logical operators.

2.4.3. *Organising albums into folders*

Albums can conveniently be organised into hierarchies using folders.



2.4.4. *Albums export*

Albums allow you to export batches of images from multiple sources. For example, you can group photos from Apple Photos, Lightroom and a folder in the same album. Without modifying the storage of your photos, Peakto can export all your photos, in the best possible resolution.

Peakto details the resolution of the exported images. You can change the size of the images you want to export. You can export the original files in the original format or export a preview

containing your latest adjustments (JPEG, TIFF, PNG). You can export your files with included metadata (except the ones attributed in Peakto).

Videos can be exported directly from Peakto. When you export a video, the original video file is preserved. If you choose to export the original Master file, no transcoding will occur for video files. Unlike images, which can be transcoded to JPEG or PNG based on your settings, videos are exported in their original format without any alterations.

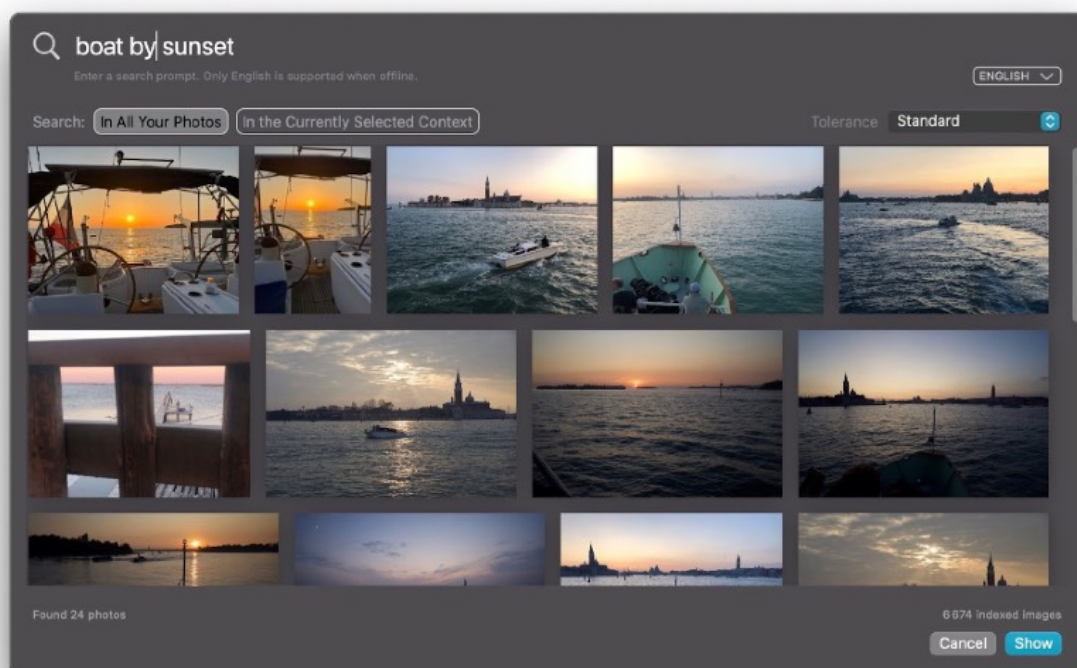
2.5. Search through all your photos & videos

Using artificial intelligence, Peakto revolutionizes how you manage and interact with your digital photos and videos. Offering a centralized search that allows you to easily and quickly browse through all of your photos and videos, regardless of where they are stored. Peakto's AI can analyze each image and movie, understand its content, and classify it accordingly. Whether you have a photo of a sunset, a birthday, or a day at the beach, Peakto can identify and appropriately categorize it.

To push the boundaries even further, Peakto has introduced 3 major functionalities that elevate the photo and video search experience to a whole new level.

2.5.1. Conversational photo and video search

Conversational photo search is a groundbreaking feature in the latest version of Peakto, transforming the way you interact with your photo collection. This innovative functionality empowers users to effortlessly find images by typing natural language commands or phrases in any language.



Starting a Conversational Search

Click on the Dialogue icon in front of the Search bar to initiate a conversational photo and videos search. Begin by typing a keyword or a descriptive phrase that represents the image you wish to find. For example, you can type "sunset" if you're looking for sunset-themed photos.

Videos in Peakto 2.0 are fully integrated with the search functionality. When you perform a search, such as "sunset and boat," Peakto will return both images and videos that match your query. For videos, a special feature highlights the most relevant parts of the video to your search.

Conversational Search & Videos

- **Search Results:** When you enter a search term, Peakto scans both images and videos for matches.
- **Video Highlights:** In the case of videos, a blue bar is displayed to indicate the portion of the video most relevant to your search term.

Example: If you search for "boat sailing on the Golden Gate Bridge," Peakto will find relevant items, including videos. For these videos, the blue bar shows the parts where the Golden Gate Bridge is visible, distinguishing them from other parts of the video where only boats are sailing.

Multiple Highlights: Sometimes, multiple blue bars are displayed to highlight several relevant parts of the video. For example, the beginning of the video might show the Golden Gate Bridge, while later parts feature boats.

Peakto's Intelligent Analysis

Peakto leverages advanced language processing capabilities to interpret and analyze your typed text. It comprehends your search query and evaluates your content to identify relevant images that match your request. The system accurately understands your intent and initiates the search process accordingly. It also detects the language used.

Refining the Search

Search works best when multiple words are used to describe the intent. Adding additional details or specifications will help narrow down the results further. This enables you to pinpoint the exact images that best suit your requirements. You can adjust the number of results obtained by choosing a broader or narrower tolerance.

You can write in any language if you're connected to the Internet. If you're offline, you can only search in English.

Navigating the Search Results

Once the search results are generated, you can easily navigate through them to locate the specific image you are seeking. With a user-friendly interface, Peakto presents the results in an organized manner, allowing you to browse through the collection seamlessly. The search text you used is logically added as a criteria in the search field.

Adding Faces and Locations

Click on the Person and Location icons to search photos with a specific person or location already tagged in your catalogs. For example: "@Lisa eating ice cream in #Barcelona".

Reminder: how does it work ?

Search by turning a query text into specific number called a signature and comparing it against all pre-computed signatures of your images. When they are close, then the image is considered to be a candidate for the result of the query. The notion of "close » is ambiguous

as it depends on the query text, the language, and the image content. It is easy to sort the returned images by distance to this query and show the closest first...but it is hard to find when to stop displaying images.

This explains why sometimes you won't find you won't find immediately what you are after

The tolerance

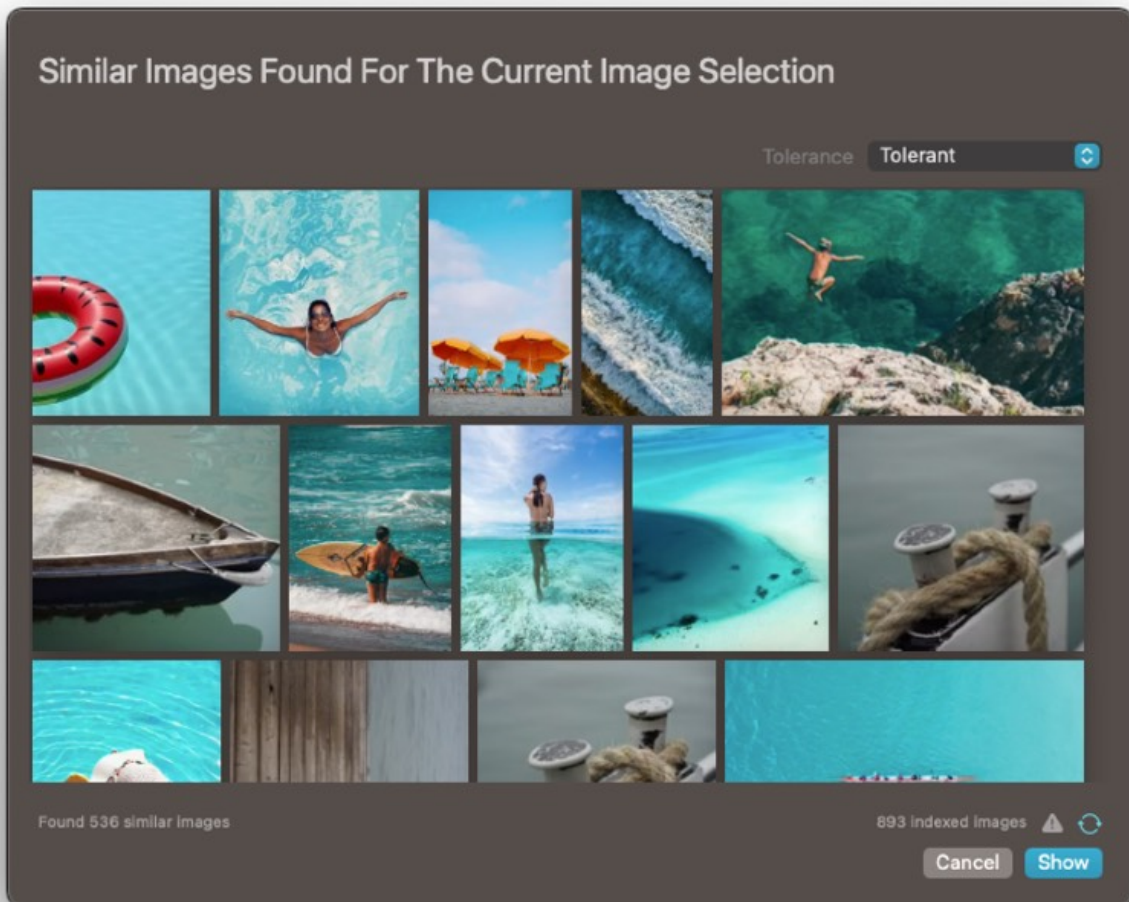
The search panel has a drop down that lets you adjust the level of tolerance between close / standard / tolerant. This simply changes the value of the above mentioned threshold and will display more or less images.

Some tips

- Use many words: the more precise the query, the more precise the result
- Don't hesitate to set a lower threshold by using the 'Tolerant' setting even if it means that you'll get more images returned
- Watch for the number of images in the index...if this number is very different from the number of images in your database, it could be that the index is not fully loaded. Consider relaunching Peakto to see if that number changes.
- Check the detected language: Peakto understands many languages but will convert the query in English to use its AI model. Make sure that the language shown in the popup is really the language you use to type
- In any case, send us feedback if you encounter issues.

2.5.3. Similarity-based image search

Peakto offers a powerful Similarity-based Image Search feature that allows users to find images and videos with similar content based on a specific image selected as the base. Similarity is considered at many levels in the image: main subject, colors, background, light conditions, etc... Peakto will return the identical or nearly identical images first, and the similar images next



Select a Base Image

To begin, choose a specific image from your collection that will serve as the base for the similarity search. This image will act as the reference point for finding other images and videos with similar attributes. You can only select one image.

Initiating the Search

Once you have the base image selected, press "Control+Click" to access the dialog window, which provides the option "Find Similar Images...". Select this option, and a dedicated search window will appear, displaying the Similar Images found by Peakto. You can also conveniently access the similar images from the new filter panel dedicated to similar features.

Analysis and Matching

Peakto's advanced algorithms analyze the content of your chosen base image to identify its key characteristics. These characteristics may include color schemes, specific objects or people present, overall composition, or the mood of the photo.

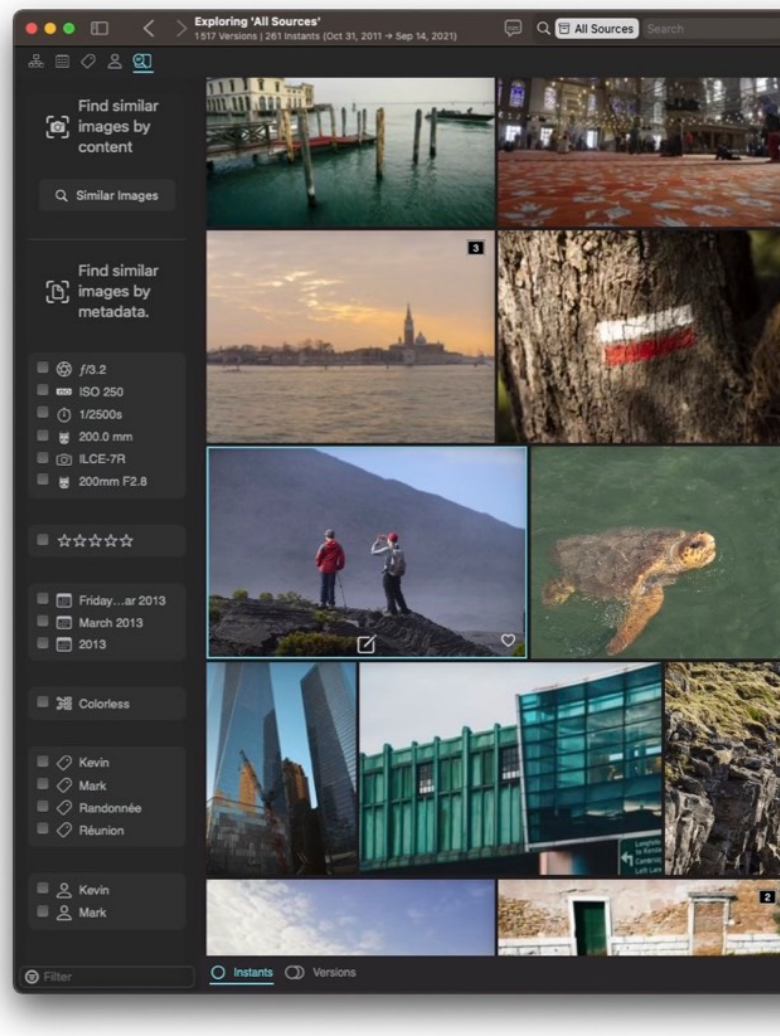
Search Results

Peakto intelligently scans through your image collection, seeking those images that share similar traits with your base image. The platform matches the identified characteristics and displays all relevant images. The search results are presented in order of similarity, with the

most closely matching images appearing at the top of the list. To control the number of results obtained, you can adjust the tolerance level, selecting a broader or narrower range of similarities.

2.5.3. Search by similar features:

The “Search by similar” feature in Peakto allows you to efficiently identify and group images and videos with similar characteristics from your collection. These features can range from technical aspects like ISO setting or lens type to content-related attributes such as landscape, portrait, or macro photography.



Choosing a Base Image

To begin, you need to select a base image from your collection. This image will serve as the reference point for finding other images with similar characteristics.

Note: if you select more than 1 image, Peakto will only list the characteristics that are common to those images.

Utilizing the New Filter Panel

Peakto features a filter panel accessible from the top bar, designed specifically for the Search by similarity functionality. Click on the icon to display the panel. You will find a comprehensive list of various characteristics associated with your selected image. These

characteristics encompass both technical details, such as ISO setting and lens type, use annotations (ratings, keywords....) and content-based classifications (from Panorama for example).

Exploring Similar Images

Click on any listed characteristic that you are interested in using for comparison. You can select one or more features that you wish other images to share in common with your base image.

Create Filters with your mouse

When you click on a characteristic, it automatically gets added to the search field, eliminating the need for manual typing or adjustments. The software handles this process for you, streamlining the search experience.

See the results instantly

As filters get added, Peakto will promptly fetch all images that match the selected characteristics, presenting you with a refined collection of relevant images

2.5.4. Centralized search thanks to filters

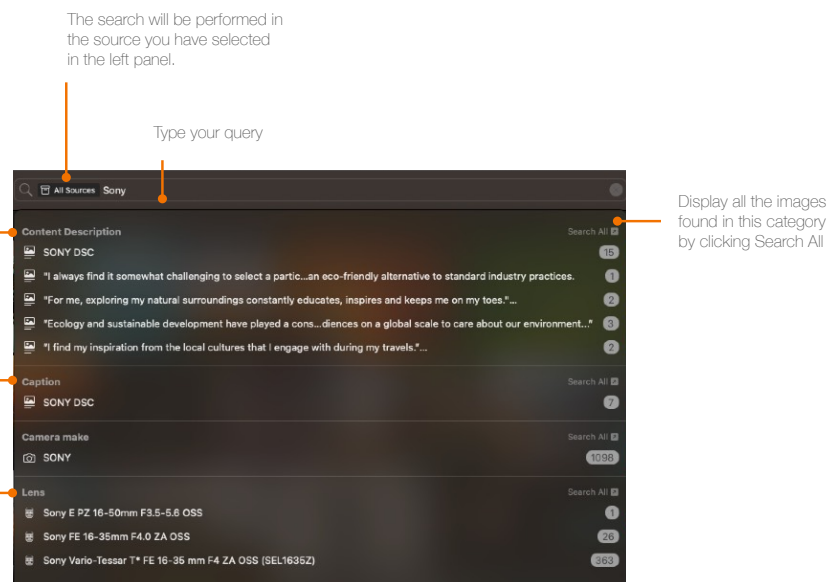
To search through all your photos and videos, use the any of the views, select all your sources in the left sidebar, then use the search bar in the top-middle and type your queries. You can restrict your search to specific folders/catalogs/albums by selecting them in the sidebar.

You can search using the metadata associated with your photos by you, by your devices (camera, smartphones), by the software you used to edit your image or automatically attributed by Peakto.

Search by metadata:

- Camera model,
- Camera Lens,
- Software,
- EXIF,
- IPTC.

Peakto searches through all the data it receives about your photos and displays the results by category.



That information appears in the inspector. You can display some of that information directly in the Grid view using the Grid View Options, in the View menu.

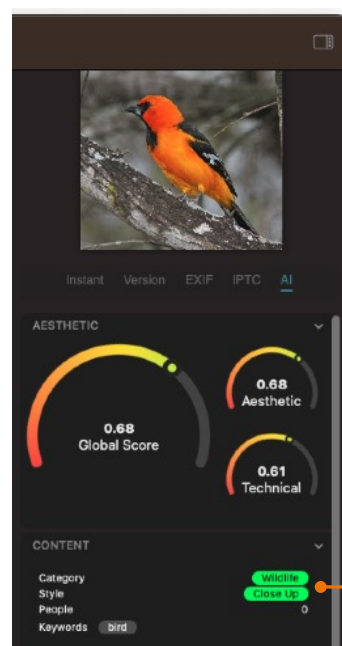
You can also search based on your annotations:

- Flags,
- Color Tags,
- Ratings,
- Favorites.

That information appears once a photo is selected:

- in the inspector,
- in the Detail view, at the bottom of each image,
- in the Grid view, by clicking on the Edit icon.

You can also search based on keywords from the underlying catalogs, or on keywords generated by the AI. Thanks to image recognition, Peakto also annotates your photos automatically with keywords, based on their content and style. You can use the keywords assigned by the AI to find images, for example all your bird pictures by typing "Bird" in the search field.



Content analysis with Categories, Styles, People and Keywords automatically added by Artificial Intelligence appears in the left panel. They can be used to search for an image.

2.6.View your images and videos on a map

When images have GPS information, you can see them displayed on a map. Two types of maps are available:

- In the inspector, a minimap is entered on the coordinates of the currently selected image, if available
- The toolbar gives access to a global map where all images of the current scope are being displayed

2.7. Categorize your photos automatically thanks to AI

Peakto'AI automatically analyzes your images and categorizes them.

Please note that Panorama only applies to the first preview of the video and not to the scenes that compose it.

Without changing the original structures of your catalogs, Peakto gives you a sorted view of your images in the Panorama View. You can also use the categories assigned by the AI as search queries.

- By category:
 1. Architecture,
 2. Astro-photography
 3. Wildlife
 4. Automotive
 5. Events & Wedding
 6. Fashion
 7. Food & Drinks
 8. Nature
 9. People
 10. Portrait
 11. Screenshots
 12. Sport
 13. Street
 14. Water & Underwater
- By Styles:
 - Abstract
 - Aerial
 - Close Up
 - Night
- Harmony and Colors
 - Compound
 - Complementary
 - Triad
 - Simple Split
 - Colors: Brown, Chocolate, Goldenrod, Yellowgreen, Medium Aquamarine...
- People
 - Alone
 - In Duo
 - In a Small Group
 - In a Large Group
- Light
 - Bright
 - Dark Images
 - Highly Saturated
 - UnderSaturated
 - High Contrast
 - Low Contrast

2.8. Access to your editing application

Peakto is the central hub for all your photos. You can right click on any images to open it in the editing software you used to modify it.

You can also open it in another editing software directly from Peakto. Once modified, the preview of your photo is updated in Peakto. If you need to force the update you can right click on the source and access to a smart re-ingestion or a new synchronization.

2.9. Gather all your modification of a same shot

You can make several edits on the same photos. But you can feel lost in your photo editing and you have difficulties in finding your original file.

Peakto introduces a new concept in photography: Instants! Not to be mistaken with the different versions of a photograph.

You can make several versions of the same point of view, of the same portrait.... But the moment you press the shutter is unique.

This unique instant...you can then modify it by retouching your photos. Peakto allows you to retrace this history. You can display in the grid each Instant thanks to the button at the bottom left of the main screen.

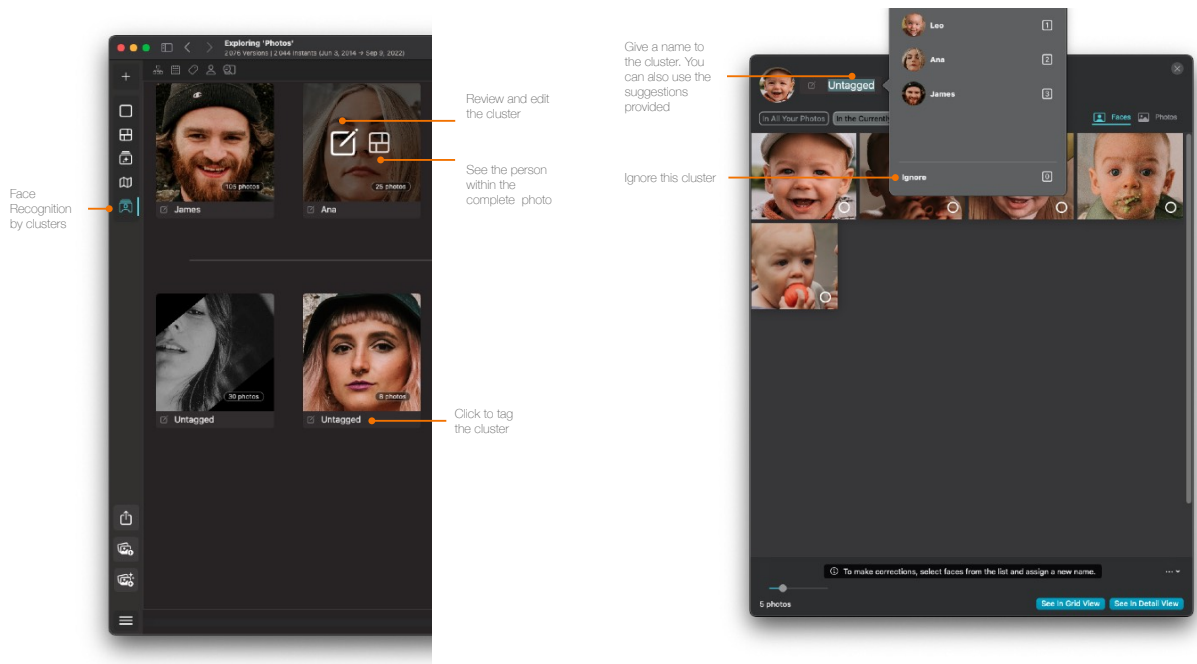
When you select a photo to display it in the Detail View, Peakto will regroup the different Instants at the top of the photo and display the editing software you used to create them or show if they are just stored in a folder.

2.10. Annotate people with Face Recognition

2.10.1. Face Annotation Using Clusters

When you ingest a new photo source into Peakto, the AI analysis will automatically run and will perform face recognition on the images, identifying all the faces present. It will then group these faces into clusters of similar appearances.

Clusters containing more than five faces will be displayed on a newly created screen dedicated to face recognition, in the left sidebar.



To tag or annotate these faces, you simply need to name the clusters. By clicking on the edit button, you can see all the faces recognized within that cluster to validate them before naming the cluster. Once named, all the photos in the cluster will be annotated with the name of the person automatically.

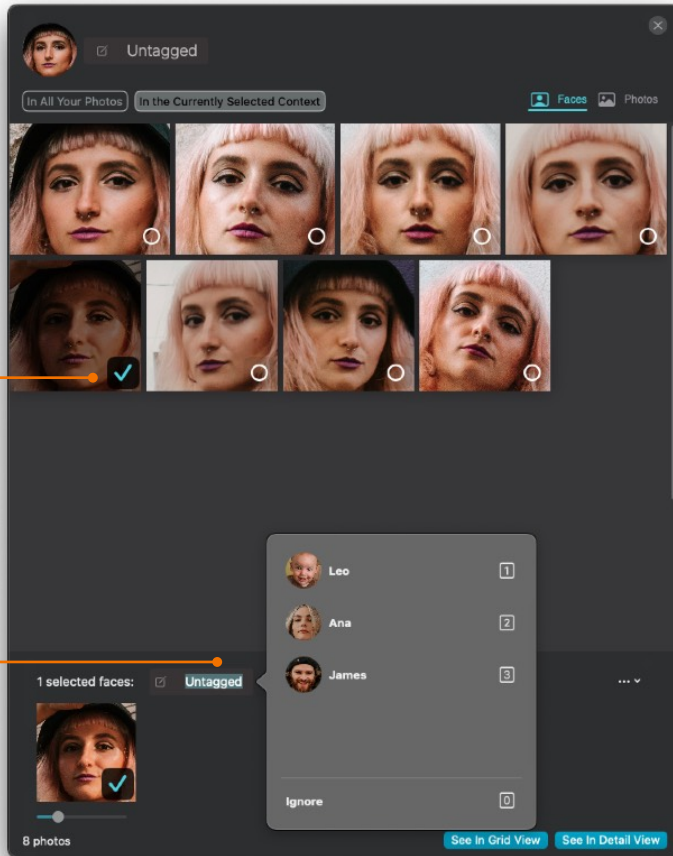
Now, the untagged cluster becomes a named cluster called James. You can still review and change its name if needed, or choose to ignore the cluster, which will remove it from the view.

In the cluster view, you choose between two icons: the first one to see a focused view on faces, the second one to see the person within the complete photo.

This process makes it easy to organize and manage face annotations within Peakto, ensuring your images are well-categorized and searchable.

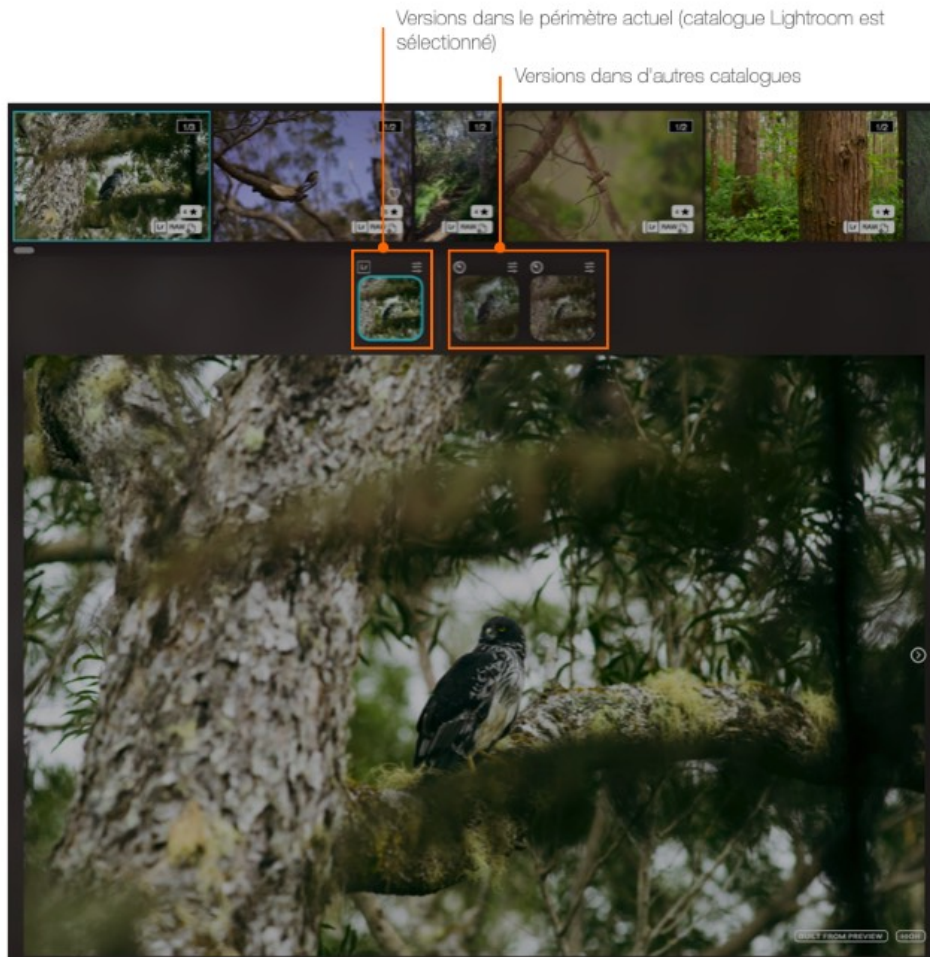
If you notice an error in the face recognition results—such as identifying someone incorrectly—you can easily correct it. For instance, if a person is incorrectly identified as Ana but is actually someone else, you can select that person and assign them the correct name.

For example, if the correct name is Maureen, you can change it, and the photo will be moved out of the current cluster. A new cluster named Maureen will be created with the correct image.



Select the person you want to edit

Assign the correct name



This allows you to maintain accurate face recognition and

within Peakto.

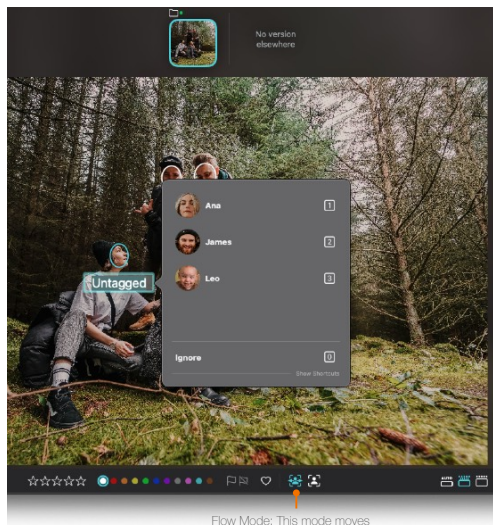
organization

2.10.2. Comprehensive Face Annotation: Flow and Manual Modes

In Peakto, you might miss some people or encounter situations where individuals appearing only once or twice haven't created any clusters. You can still annotate these faces by going into the Detail View and choosing between two modes for face annotation:

- **Manual Annotation Mode:** This mode shows all the faces in a picture and lets you annotate them individually.

- **Flow Mode:** This mode moves from one image to another, allowing you to annotate faces sequentially.



Flow Mode: This mode moves from one image to another, allowing you to annotate faces sequentially.



Manual Annotation Mode: This mode shows all the faces in a picture and lets you annotate them individually.

1. Manual Annotation Mode:

- Select a picture with unannotated faces.
- Click on each face to assign a name.
- This method allows you to quickly annotate all faces in a single picture.

2. Flow Mode:

- Start flow annotation to move through pictures one by one.
- If you encounter a face you want to ignore, such as an unknown person, hit the ignore button to skip them.
- For new faces, assign names as you go. For example, if you see a new person, name them and press the tab key to move to the next face.
- If Peakto recognizes a face similar to one already annotated, it will suggest names from a list. You can quickly select the correct name using shortcut keys.

2.10.3. Merging Clusters

If you notice that two clusters represent the same person but are named differently, you can merge them:

- Go to the cluster view and select the clusters you want to merge.
- Rename one of the clusters with the correct name.
- Peakto will merge the clusters, combining all images into a single, accurately named cluster.

2.10.4.Using Filters and Viewing Annotations

1. Filter View:

- Click on the Faces view to see all annotated faces within a specific scope.
- The top section displays Peakto faces, while the bottom section shows faces from the original catalog.
- Use filters to quickly find images of specific people. For example, if you're in a Lightroom catalog, you can see all Lightroom faces and turn their annotations into Peakto annotations.

2. Limitations:

- Currently, Peakto does not allow you to annotate faces that are not visible (e.g., people seen from the back).
- This feature might change in the future, but for now, only recognized faces can be annotated.

We hope you find the new faces module in Peakto helpful for organizing and managing your images. Enjoy using Peakto for all your face recognition and annotation needs!

3. Editing Workspaces

Peakto has inbuilt support for some third party editing apps and lets you invokes those apps in a controlled manner through the use of an editing workspace

Editing workspaces represent a specific type of interaction with an editing app. They usually consist in :

- a quick access to all the files edited in the application
- A work folder where new files can be added

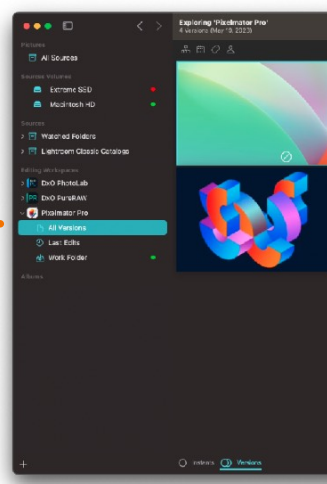
Depending on the app, the type of interaction or capabilities of the workspace are different.

3.1.The Pixelmator Pro editing workspace

Peakto includes a dedicated Workspace for Pixelmator Pro v3 and following.

All Pixelmator Pro files are rendered on the fly, at full resolution, using Pixelmator in the Background.

When adding a new file to the work folder of that workspace, a new Pixelmator Pro document is created from the source image



This workspace has the following properties

- All Pixelmator Pro files are rendered on the fly, at super high resolution preview, using Pixelmator in the background. You have the same experience than in Pixelmator. You can click on the file from Peakto to open it in Pixelmator for editing where you can access to all your layers and edits.
- All Pixelmator Pro files are rendered on-the-fly, providing super high-resolution previews by utilising Pixelmator in the background. This ensures that you have the same immersive experience as in Pixelmator itself. Should you wish to edit a file, simply click on it within Peakto, and it will open in Pixelmator, granting you access to all your layers and edits.
- The 'Last Edits' section shows the latest document you have edited in Pixelmator, allowing you to easily and quickly return to edit them.
- When adding a new file to the work folder of that workspace, a new Pixelmator Pro document is created from the source image

3.1.1. Editing any images in Pixelmator Pro

From Peakto, you have the ability to select images from various catalogs such as Capture One, Lightroom, and more. Simply drag and drop them into the Pixelmator Pro Work Folder located in the left sidebar. This action will create a Pixelmator Pro document using those files. Clicking on the documents will open them in Pixelmator Pro, granting you access to all the layers and edits. If your original document was a RAW file, it will appear in the RAW layer within the Pixelmator Pro document.

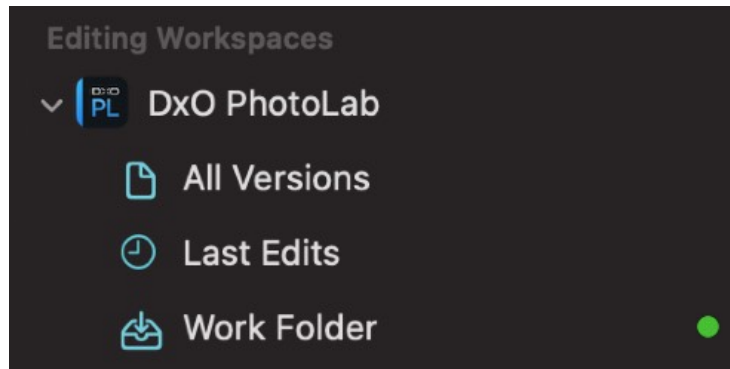
Once you have completed your edits, Peakto will reflect the synchronised image, capturing the changes made. Additionally, Peakto will indicate that your image now has different versions: the original document in Capture One and the new one in Pixelmator Pro. Peakto can serve as a starting point for editing your image in Pixelmator while keeping track of all the changes made.

Moreover, you have the option to create a new document directly in Pixelmator. By dragging and dropping an image from Peakto to Pixelmator Pro, you can add it to your new document. You can then save this new document directly into the Peakto Work Folder, where it will appear in Peakto. Additionally, you can annotate your new images in Peakto and access the AI analysis conducted within Peakto, including aesthetic scores, content analysis, and color harmonies.

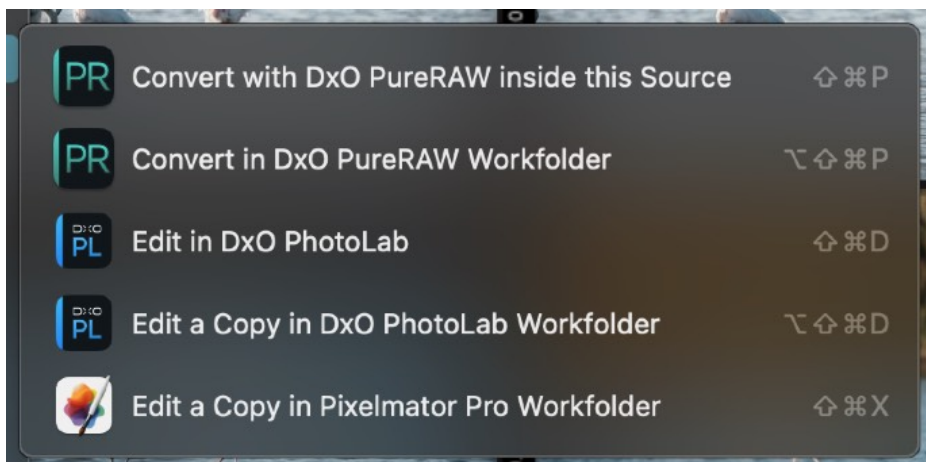
3.2. The DXO PhotoLab editing workspace

Peakto includes a dedicated Workspace for DXO PhotoLab v5 and v6. PhotoLab edits are stored in dedicated sidecar files called 'dop' files and these files are now detected by Peakto when scanning folders. Changes in those files, or new such files are interpreted as events on the underlying master images. As a result, Peakto will now create a dedicated version for each of those sidecars, and retrieve the DXO generated preview to accurately reflect the aspect of the preview. Peakto will also accurately render virtual copies that are created inside DXO.

The DXO PhotoLab workspace comes with **2 new menu items** when selecting an image in Peakto that allow to invoke PhotoLab directly from Peakto:



- Edit in DXO PhotoLab: will launch PhotoLab on the master image in its original location
- Edit in a Copy in the DXO PhotoLab Work Folder : will launch PhotoLab on a copy of the master file inside the working folder.



Consider the following example:

- let's start from a master image in one watched folder. Peakto renders it normally as a file.



- Invoke Edit in DXO and perform some edits in DXO. The rendered version inside Peakto is now the DXO preview for that file.



- Add a virtual copy in DXO for the same image:

This workspace has the following properties:

- the **All Versions** node references all DXO **dop** files and associated versions, fully rendered
- The **Last Edits** node references the same images as the **All Versions** node sorted by edit date (last edits come first).
- The **Working folder** node contains the DXO versions that are created inside the working folder.

3.2.1. Referencing DXO versions outside watched folders

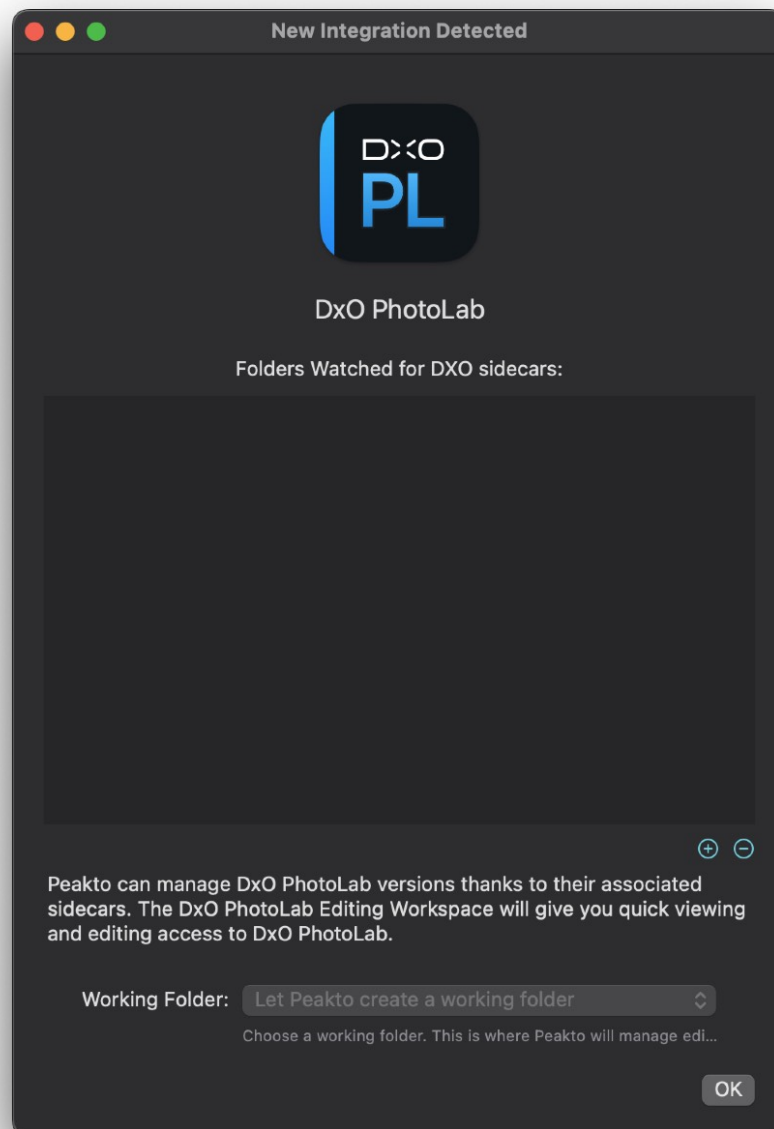
Peakto lets you also reference DXO versions that are stored outside watched folders. This is interesting if your images referenced in catalogs such as C1 or Lightroom. Editing in DXO will create a dop file inside the original file hierarchy which is not scanned by Peakto. As a result, those edits would be missed.

The DXO PhotoLab workspace comes with a option that allows you to add full folder hierarchies to be scanned only for the presence of dop files.

To add such a hierarchy of folders:

- choose Edit Software Integration from the source contextual menu

- Click the + button to add a folder to the list



3.3.The DXO PureRAW editing workspace

This workspace has the following properties :

- All exports created from DXO PureRaw can be referenced there,
- A working folder lets you put copies of raw images for which you want to run a DXO PureRaw process.

